

## LEEDS SCHOOL FORUM

---

Meeting to be held in on  
Thursday, 16th November, 2023 at 4.30 pm

---

### MEMBERSHIP

Bradley Taylor, A, Primary Governors - Kirkstall Valley Primary  
Kate Burton, E. Academy Reps – Alder Tree Primary  
Rebecca White, B. Primary Heads, Sharp Lane Primary  
Victoria McWalker, A. Primary Governors, St Margaret's Horsforth C of E  
Stratis Koutsoukos, B. Primary Governors, St Nicholas Catholic Primary  
Nick Tones, J. Non Schools, Schools JCC  
Christopher Thornton, J. Non Schools 16-19 Providers  
Simon Prinsep, E. Academy Reps, Abbey Grange CofE  
Peter McQuillen Strong, J. Leeds Catholic Diocese  
Gavin Hosford, E. Academy Reps - Green Meadows  
Rachel Colbourn, E. Academy Reps - Bramhope Primary  
Jatinder Ubhi, A. Primary Governor - Swarcliffe Primary  
Dave Kagai, A. Primary Governors - St Nicholas Primary  
Sarah Talbot, E. Academy Reps - East Ardsley Primary  
John Garvani (LSF), A. Primary Governors - Broadgate Primary School  
John Hutchinson, B. Primary Heads - St Theresa's Catholic Primary  
Peter Harris, B. Primary Heads - Farsley Farfield Primary  
Julie Harkness, B. Primary Heads - Carr Manor Community school - Primary Phase  
Emma Wraight, B. Primary Heads - Fieldhead Carr Primary  
David Webster, C. Secondary Governors - Pudsey Grammar  
Delia Martin, D. Secondary Heads - Benton Park  
David Gurney, E. Academy Reps - Cockburn School  
Rob Dixon, E. Academy Rep, Pudsey Waterloo Primary  
Neil Miley, E. Academy Reps - Dixons Academy  
John Thorne, E. Academy Reps - St Mary's Academy Menston  
Joe Barton, E. Academy Reps - Woodkirk Academy  
Russell Trigg, F. Governor East SILC  
Mary Ruggles, H. Academy Specialist Provision - Springwell Academy  
Angela Hynes, J. Non School PVI - Nursery Provider  
Dan Cohen (Leeds School Forum), J. Jewish Faith Schools

## A G E N D A

<b>Item No</b>	<b>Title</b>	<b>Lead</b>	<b>Time</b>	<b>Purpose</b>
1.	<b>APOLOGIES</b>	<b>Chair</b>	<b>16:30</b>	<b>For information</b>
2.	<b>SCHOOL FORUM MEMBERSHIP</b>	<b>Chair</b>	<b>16:35</b>	<b>For information</b>
3.	<b>MINUTES OF PREVIOUS MEETING</b> <i>3 - 14</i>	<b>Chair</b>	<b>16:40</b>	<b>For decision</b>
4.	<b>MATTERS ARISING</b>	<b>Chair</b>	<b>16:45</b>	<b>For decision</b>
5.	<b>SCHOOL FUNDING PROPOSALS</b> <b>2024/25</b> <i>15 - 46</i>	<b>Lucie McAuley</b>	<b>16:50</b>	<b>For decision</b>
6.	<b>ANY OTHER BUSINESS</b>	<b>Chair</b>	<b>18:15</b>	<b>For information</b>
7.	<b>MEETING DATES FOR 23/24 AND</b> <b>FORWARD PLAN</b> <i>47 - 48</i>	<b>Chair</b>	<b>18:25</b>	<b>For information</b>
8.	<b>CLOSE</b>	<b>Chair</b>	<b>18:30</b>	<b>For information</b>



Item	Title	Actions
1.0	<b>Welcome and Apologies</b>	
1.1	The Chair welcomed everyone to the meeting. Apologies were noted and introductions made.	
2.0	<b>Schools Forum Membership</b>	
2.1	<p>Vacancies remain for:</p> <ul style="list-style-type: none"> <li>1 x Primary Governor</li> <li>1 x PVI Nursery Provider vacancy</li> <li>1 x Alternative Academy vacancy</li> <li>1 x Primary Headteacher vacancy</li> <li>4 x Academy Headteacher vacancy</li> <li>1 x Academy Special Provision</li> <li>1 x SILC Governor</li> <li>1 x SILC Principle</li> <li>1 x Non-school representatives</li> </ul> <p><b>Action:</b> <b>Action</b> John Rob and Mary are happy to continue. Kate will organise the elections. Peter is going to Primary Headteacher Forum on 17<sup>th</sup> October to promote Schools Forum membership.</p>	
3.0	<b>Minutes of Previous Meeting</b>	
3.1	The minutes were agreed.	
4.0	<b>Matters Arising</b>	
4.1	DC has drafted communications that will go on Leeds for Learning to promote membership of the School Forum.	
4.1.1	5.7.1 a proposal to refund the High Needs Block transfer is further on in the agenda.	
4.1.2	AOB: Would anyone like to chair the Schools Forum going forward? Peter is happy to continue chairing and John will step in in Peter's absence as vice chair.	
5.0	<b>DSG MONITORING REPORT 23/24</b>	
5.1	LM went through the Dedicated Schools Grant 23/24 Budget Monitoring Month 5 report.	
5.1.2	<p>Key highlights:</p> <ul style="list-style-type: none"> <li>● Report projects in year overspend of £924k, which represents 0.18% of the estimated funding.</li> <li>● Projected to have an overall surplus by the end of the year.</li> </ul>	
5.1.3	<p><u>Schools Block</u> The majority of the Schools Block is allocated to primary and secondary schools. The De-delegated budget has an underspend £233K. Current projections on the Growth Fund shows an underspend of £339k compared to the budget set in January.</p>	
5.1.4	<p><u>Early Years Block</u> Still very early in year to project however it is anticipated that this block will be on budget. Hourly rate increased in 23/24 and in July the Government increased the rate again from September 2023 Even with increase on hourly rate, the block is still expected to be balanced.</p>	

<p>5.1.5</p> <p>5.1.6</p> <p>5.1.7</p> <p>5.1.8</p>	<p><u>High Needs Block</u></p> <p>There is a projected overspend of £1,304k on the High Needs Block. The projected overspend includes £3.3m transfer in from the Schools Block to the High Needs Block.</p> <p>There has been an increased growth in EHCPs with 60% more applications. Last year there was an underspend in Out Of Authority placements, and it is expected to be the same this year.</p> <p>Top-ups to institutions is projected to be overspent by £3,347k. Within this, the largest increase is in top-ups paid to mainstream schools (£3,255k).</p> <p>The additional £6k blocks budget is projecting a pressure of £2.2m.</p> <p>In total, this means mainstream schools will receive £9.5m more than 22/23.</p> <p>Invest to Save is underspent. KJ advised that the original proposal included 2 rounds of recruitment for leadership, both internal and external and there were not enough candidates. This in turn contributes to underspend. £299K is projected to be spent from £1m budget. Some of the money been spent on consultancy costs and adverts.</p> <p><u>Central schools service</u></p> <p>Minimal underspend on Admissions.</p> <p><u>Reserves</u></p> <p>A refund totalling £1,250k has been made to all schools that contributed to the de-delegated surplus at the end of 2022/23.</p> <p>Forum asked to note the position included in the report.</p>	
<p>6.0</p>	<p><b>DSG MEDIUM TERM FINANCIAL STRATEGY 2024/25</b></p>	
<p>6.1</p> <p>6.1.2</p> <p>6.1.3</p> <p>6.1.4</p> <p>6.1.5</p> <p>6.1.6</p> <p>6.1.7</p>	<p>The Report outlines the projection.</p> <p>Overspend of between £14.4m and £50m if we don't change anything and most of that overspend is on the High Needs Block.</p> <p>The proposal in July was to reverse the transfer to the High Needs Block. In light of the revised projections, this is no longer recommended.</p> <p>The high needs cap is now called the Gains Limit Factor and Leeds is one of 32 Local Authorities to be subject to the factor and capped.</p> <p>It was noted by Forum member that this is a big change from the summer when we thought we had surplus money and is no longer the case.</p> <p>High Needs Block funding has increased on annual basis over recent years and the assumption for 24/25 is a 5% increase but this is expected to reduce to 3% in future years, based on the most recent information from DfE.</p> <p>The national picture is that there is increasing high needs demand and Leeds continues to see high demand in accordance with national trends.</p> <p>In tables 1 and 2 of the paper, the largest increase in expenditure in these projections is in High Needs funding to mainstream schools.</p>	

6.1.8	Schools Forum discussed the imbalance between anticipated DSG income and projected levels of expenditure. It was advised that the advice about the 3% increase has been there for about 18 months, and we can't assume what the increase will be going forward and that 3% is reasonable as we only get notified 1 year in advance.	
6.1.9	<p>There was a discussion on table 3 (HNB projected income and expenditure) of the paper and the movement of projections in the HNB.</p> <p>A question was asked around where the assumptions come from about the number of children to be funded in the future and what is the basis for this assumption?</p> <p>KJ advised that there has been a 118% increase in EHCP requests. Needs are increasing, so in turn the numbers are high. Schools Forum discussed EHCPs and FFI in relation to national understanding of the needs and the effect in Leeds.</p>	
6.1.10	<p>This will be under constant review and changes will be made as and when needed.</p> <p>The key query was how the projection of up to £50million of overspend in 26/27 was reached.</p>	
6.1.11	<b>Action</b> to provide further information as regards assumptions in HNB projections, particularly around SEN Top-Ups and £6k blocks.	SM/TP/ VB
6.1.12	<p>KJ explained that the DfE has established 9 Change Programme Partnerships (CPP) across England as part of the SEND and AP reforms. Leeds is one of four LAs working in the Yorkshire and Humber CPP. The programme will be trialling the proposed changes to the SEND and AP system with support from the DfE and partners from health and care.</p> <p>KJ will represent Leeds and we will implement changes. Those national changes will benefit Leeds.</p> <p>The steering group for this work requires representation from across the education sector and other stakeholders. The aim of the group is to steer the direction of the testing of the reforms and ensure it reflects the needs of the sector they are representing.</p>	
6.1.13	A new special free school opened in September 2023 and there have been increases in places available in existing schools. Along with the funding increases required, top ups to special schools (maintained, academies and free schools) are projected to increase from £24.1m in 2022/23 to £31.2m in 2024.	
6.1.14	The 24/25 High Needs Block minimum funding guarantee has dropped to between 0 – 0.5% and the inflationary impact will affect schools and high needs settings.	
6.1.15	<p>It was noted that, since 2017/18 a total of £19.15m has been transferred to the High Needs Block from other funding blocks of the DSG, to redirect funding to settings to support special educational needs pressures (£17.50m from the Schools Block and £1.65m from the Central School Services Block).</p> <p>It was noted that, with effect from the end of 2019/20, new provisions were added to the School and Early Years Finance Regulations that require local authorities to carry forward any DSG overspends or deficit balances to the following year. Such deficits were ringfenced to be dealt with from future DSG income, rather than being funded by the Council, unless otherwise authorised by the Secretary of State. This provision for ringfencing DSG deficits was originally due to be withdrawn at the end of 2022/23. However, it has now been extended to the end of the 2025/26 financial year. If the provision is not extended further the council would require sufficient funding available in other reserves to offset any DSG deficit. As Leeds does not currently have a DSG deficit, a DSG management plan is not currently needed.</p>	
Schools Forum noted the DSG medium term projections.		

7.0	<b>SCHOOL FUNDING UPDATE 2024/25</b>	
7.1	Local authorities are required to consult with schools on proposals for funding arrangements and report back to their Schools Forum. Schools Forums are then responsible for either making decisions or providing views on the various proposals, in line with the powers set out by the DfE.	
7.1.2	<p>It was noted that:</p> <ul style="list-style-type: none"> <li>• Allocations are based on the October 2022 census.</li> <li>• DfE will move forward with plans for direct national funding formula.</li> <li>• £525m has been provided nationally to support teachers' pay award in 23/24 and in 24/25 this will increase to £900m.</li> <li>• There is a change to allocation for split sites funding.</li> <li>• For the first time this year, there is provision for a falling rolls fund. We already mirror national funding formula.</li> <li>• Looking at following the ESFA system for school business rates</li> </ul>	
7.1.3	The Schools Block funding formula is proposed by LA and will go to consultation.	
7.1.4	Growth funding will be allocated to local authorities as part of the Schools Block based on growth in pupil numbers between the October 2022 and October 2023 censuses. Growth funding allocations for 2024/25 will not be confirmed by the ESFA until December 2023.	
7.1.5	LA will have discretion on whether to have a falling rolls fund; the criteria is restrictive and Schools Forum will have to agree this. Work is ongoing with the Sufficiency and Participation Team to determine the merits of a falling rolls fund.	
7.1.6	JT asked how falling rolls affect schools when the population is decreasing. VB said that falling rolls is to support schools in staying open and solvent where there is an expectation of an upturn in numbers.	
7.1.7	<p><b>High Needs Block</b></p> <p>The High Needs Block (HNB) indicative allocation for 2024/2025 is £133,934k. This is an increase of £6,474k compared to 2023/24 after taking into account the supplementary high needs funding received in 2023/24.</p>	
7.1.8	Leeds will receive the maximum increase of 5%.	
7.1.9	<p><b>Central School Services Block</b></p> <p>The indicative allocation for the Central School Services Block (CSSB) in 2024/25 is £5,090k which is a decrease of £16k compared to 2023/24. Funding for this block is split between historic commitments and ongoing services.</p>	
7.1.10	<p><b>Early Years Block</b></p> <p>As in previous years, the Early Years Block allocation is based on pupil numbers in the January census and therefore allocations for 2024/25 have not yet been released.</p>	
7.1.11	<p><b>De-delegation of services</b></p> <p>Schools Forum can agree that some funding for maintained primary and secondary schools is retained centrally each year, so that the council can provide certain services to schools that they would otherwise have to pay directly from their budget (such as reimbursing schools for the cost of staff on maternity leave). This arrangement is known as de-delegation and we will be consulting with maintained mainstream schools later in the autumn on the proposals for their de-delegated contributions in 2024/25.</p>	

7.1.12	24/25 funding consultation will begin on 9 <sup>th</sup> October and run to 1 <sup>st</sup> November 2023 and will cover: <ul style="list-style-type: none"> <li>• The local schools funding formula</li> <li>• Any proposals to transfer funding between the blocks of the Dedicated Schools Grant</li> <li>• Maintained school contributions to severance costs.</li> </ul>	LM
7.1.13	Liz and Lucie will be attending a Head Teachers' briefing and encourage everyone to respond to the consultation.	
7.1.14	A proportion of schools do not contribute to the Schools Block transfer. LM to advise on numbers. It is anticipated that an increased number of schools would contribute in 24/25.	
8.0	<b>Any Other Business</b>	
8.1	It was reported that maternity pay and splitting of parental leave is having an impact on some school finances. SM said the number affected is small so far and it is unlikely to have a significant effect on de-delegated maternity budgets	
9.0	<b>Meeting Dates for 2023-24 and Forward Plan</b>	
9.1	The next meeting on 16 <sup>th</sup> November will consider the results of consultation on the formula and block transfers.	
9.1.2	Tuesday 16 <sup>th</sup> January Authority Proforma Tool deadline 22 <sup>nd</sup> February early years entitlement rates, budget monitoring.	
10.0	<b>Close</b>	
	The next meeting will take place via MS Teams on Thursday 16th November at 1630-1830.	



## **Main Assumptions on Medium Term Financial Strategy (MTFS) projections**

### **Income**

Funding is only announced 1 year at a time. For 2024/25 there is an increase of the maximum 5%. Previous advice from ESFA is to assume a 3% increase in funding in future years, which is consistent with the minimum increase in 2024/25. If the assumption is changed to assume the 2024/25 increase continues, this would result in additional income of £2.5m in 2025/26 and £5.2m in 2026/27.

There is no reason to assume that the supplementary funding received in 2022/23 and 2023/24 will continue.

Since the MTFS was produced, indications are that there will be an increase in places at Luminare (the group of colleges based at Leeds City College), which will reduce income available in 2024/25. Most of the increase is due to colleges in other local authority areas. Although this will be compensated for in the import / export adjustment, this adjustment is lagged and so won't take effect until 2025/26.

### **Expenditure**

**Special school places** - assumptions on special school places available are based on known increases at existing schools plus the expansion of the new special free school. In September 2023, there was an increase in places available of 108 with a further increase of 86 from September 2024 and another 108 from September 2025.

**Mainstream top-ups** - despite the increase in places from September 2023, top ups to mainstream schools are still projected to be 33.45% higher in 2023/24 compared to 2022/23. There are no indications that the rate of increase is slowing, so it is reasonable to assume there will be a similar increase in future years.

**Additional £6k blocks** - the increased number of pupils in mainstream schools has resulted in significant increases on the additional £6k blocks budget. Projections are that the number of eligible Reception to Year 11 pupils receiving FFI will increase by 970 (33%) between April 2022 and March 2024. Although the increase in pupils is only 33%, the increase in costs over the same period is 91.44%. This is because the additional high needs pupils are more likely to attend schools that are already inclusive and so have a higher number of pupils already. The projected increase in future years has been set at 33%. Given previous years increases, without changes to the funding calculations, it is likely that the actual increase will be higher.

**Other budgets** - the High Needs Block funds a number of staff (e.g. the Sensory Service, SENIT, STARS), some of whom are teachers. All pay budgets have been assumed to increase by 4% in line with the Leeds City Council overall MTFS. However, given that the 2023 teachers pay award was 6.5%, there is a risk this may not be enough. In addition, it has recently been announced that teachers pension contributions will increase from April 2024 from 23.6% to 28.6%, which is an increase of 21%. This was not known about when the MTFS was completed and so will add further costs to future years.

This page is intentionally left blank

## **MORE SUPPORT FOR CHILDREN WITH SPECIAL EDUCATIONAL NEEDS**

- Over a thousand new special school places confirmed, as additional seven special free schools to be built
- Local authorities in every region selected to be at the forefront of delivering transformational reform set out in the Special Educational Needs and Disabilities and Alternative Provision (SEND and AP) Improvement Plan
- Reforms backed by £70 million to test what works to ensure children and young people get the best possible services

Over a thousand more children and young people with SEND are set to benefit from access to high-quality specialised learning, with seven new special free schools in Cambridgeshire, Kent, Merton and Norfolk selected to be built alongside the existing 83 already committed to opening, located across England from Devon to Darlington.

Once complete, this investment will almost double the number of special free school places available across the country – from around 8,500 to 19,000 – ensuring all children receive a quality education, tailored to their needs.

Today, local authorities across the country have been selected to deliver a ground-breaking new programme to test and refine the reforms to services for young people and families.

Backed by £70 million, the local authorities will help inform the development of new national standards to improve the consistency of provision across the country.

Each area will also bring together education and health services, as well as parents and families to develop an inclusion plan that sets out how they will deliver local services in a co-ordinated way – for example making sure a child with special educational needs who is behind in reading is quickly assessed and given the right support. This addresses feedback from families that the current system is often fragmented with agencies not working together.

This follows recent confirmation that high needs funding is increasing by a further £440 million for 24/25, bringing total funding to £10.5 billion – an increase of over 60% since 2019-20.

### **Minister for Children, Families and Wellbeing, Claire Coutinho said:**

“Making sure children with special educational needs and disabilities get a superb education is a priority.

“Earlier this year our Improvement Plan set out systemic reforms to make sure every child and young person gets consistently high-quality support, no matter where in the country they live.

“Today we’re making sure that those reforms are informed by the experiences of real families, up and down the country, and creating the thousands of new places at specialist schools and in staff training courses that are needed to make sure our plan is a success.”

The Government is also confirming today an expansion in training for early years staff, adding an extra 2,000 training places for early years special educational needs co-ordinators on top of the 5,000 already announced.

Measures confirmed in the Improvement Plan included:

- a new leadership level National Professional Qualification for Special Educational Needs Co-ordinators (NPQ for SENCOs), ensuring SENCOs have the training they need to provide the right support to children. The NPQ will replace the NASENCO from September 2024 and will start in Autumn 2024 and start in Autumn 2024. Further information on the transition to the new NPQ can be found here: [Transition to national professional qualification for special educational needs co-ordinators - GOV.UK \(www.gov.uk\)](https://www.gov.uk/government/news/transition-to-national-professional-qualification-for-special-educational-needs-co-ordinators)
- a new approach to AP will focus on preparing children to return to mainstream or prepare for adulthood. AP will act as an intervention within mainstream education, as well as high-quality standalone provision, in an approach that meets children's needs earlier and helps prevent escalation.
- an extension until March 2025 to the AP Specialist Taskforces, which work directly with young people in AP to offer intensive support from teams made up of experts, including mental health professionals, family workers, and speech and language therapists, backed by an additional £7 million investment.
- a doubling of the number of supported internship places by 2025, from around 2,500 to around 5,000, backed with £18 million of funding to help young people make the transition into adulthood.
- £30 million to go towards developing innovative approaches for [short breaks for children, young people and their families](#), providing crucial respite for families of children with complex needs - the programme funds local areas to test new services including play, sports, arts and independent living activities, allowing parents time to themselves, while their child enjoys learning new skills. 13 local authorities are taking part in the second year of the programme.

**ENDS**

For more information and to arrange an interview with the minister, email [monica.wilson@education.gov.uk](mailto:monica.wilson@education.gov.uk) and [adam.collins@education.gov.uk](mailto:adam.collins@education.gov.uk)

Notes to editors:

- The seven new special free schools have been approved in Cambridgeshire, Kent, Merton and Norfolk local authorities. The full list of schools approved:
  - Merton, 120 place all-through in Morden
  - Norfolk, 170 place all-through in Great Yarmouth
  - Norfolk, 100 place all-through in Down Market
  - Kent, 250 place all-through in Swanley
  - Kent, 120 place all-through in Whitstable
  - Cambridgeshire, 210 place all-through in Fenland
  - Cambridgeshire, 60 place secondary in Gamlingay

- Added to the 33 announced in March 2023 and the Bury free school which was approved in May 2023 and is now in pre-opening, we have approved a total of 41 special free schools in this wave. The full list of the 33 special free schools including Bury.
  - Barnsley and Sheffield, 200 place secondary
  - Bath and North East Somerset, 120 place all-through
  - Birmingham, 400 place all-through
  - Birmingham, 120 place 14 to 19
  - Blackpool, 56 place secondary
  - Bracknell Forest , 100 place, all-through
  - Bristol, 164 place, all-through
  - Central Bedfordshire, 130 place all-through
  - Cheshire East, 60 place all-through
  - Cheshire East, 60 place all through
  - Darlington, 48 place secondary
  - Devon, 70 place, 9 to 16
  - East Riding of Yorkshire, 120 place all-through
  - Enfield, 96 place secondary
  - Hampshire, 125 place, secondary
  - Hillingdon, 180 place, all-through
  - Isle of Wight, 75 place 9 to 16
  - Leeds, 200 place, 7 to 16
  - Leicestershire, 90 place, 10 to 16
  - Middlesbrough, 100 place, all-through
  - North East Lincolnshire, 150 place, 8 to 19
  - North Yorkshire 120 place, 8 to 16
  - Salford, 150 place, primary
  - Somerset, 64 place, 9 to 16
  - South Tyneside, 56 place primary
  - Suffolk, 117 place primary
  - Surrey, 170 place secondary
  - West Sussex, 130 place all- through 4 to 18
  - Wiltshire, 130 place all-through
  - Windsor and Maidenhead, 100 place, secondary
  - Wokingham, 100 place, all-through
  - Wokingham, 100 place all-through
  - Worcestershire, 120 place all-through
  - Bury, 60 place secondary
- Today, we have also published on GOV.UK the free schools ‘How to Apply’ Guidance setting out the criteria for applicants wishing to apply to run one of the seven new schools.
- The LAs included in the Change Programme Partnerships are:
  - East Midlands: Leicester, Leicestershire, Rutland-
  - East of England: Bedford, Central Bedfordshire, Luton
  - London: Barnet, Camden, Enfield, Islington
  - North East: Durham, Gateshead, Hartlepool, Stockton on Tees
  - North West: Manchester, Oldham, Rochdale, Trafford
  - South East: Brighton, East Sussex, Portsmouth, West Sussex
  - South West: Gloucestershire, Swindon

- West Midlands: Herefordshire, Shropshire, Telford and Wrekin, Worcestershire
- Yorkshire and Humber: Bradford, Calderdale, Leeds, Wakefield
  
- Each partnership will work closely with parents, carers and children and young people to ensure they are involved in the testing, learning and development of the reforms.
- Partnerships will also receive extensive hands-on support and expertise from REACH (Reaching Excellence and Ambition for all Children), the Department's Delivery Partner. PA Consulting will lead the consortium, comprising of IMPOWER, Council for Disabled Children (CDC) and Olive Academies.



---

## Report of the Director of Children and Families

## Report to the Leeds Schools Forum

Date: 16 November 2023

## Subject: 2024/25 School Funding Proposals

Report Author: Lucie McAulay / Rosie Harrison

Contact telephone number: 0113 3788766

---

### Summary of main issues

1. The Dedicated Schools Grant (DSG) is allocated in four blocks: schools, high needs, early years, and central schools services. The Education and Skills Funding Agency (ESFA) continues to use the national funding formula (NFF) to calculate the blocks within the DSG that are allocated to local authorities. Local authorities currently have some flexibility in how this funding is allocated to schools and to transfer funding between blocks, within the constraints set out by the ESFA.
2. Local authorities are required to consult with schools on proposals for funding arrangements and report back to their Schools Forum. Schools Forums are then responsible for either making decisions or providing views on the various proposals, in line with the powers set out by the DfE.
3. This report presents the outcome of a recent consultation with mainstream schools on funding arrangements for 2024/25. 94.52% of respondents supported the council's proposal to transfer 0.5% schools block funding to the high needs block from the schools block (approx £3.49m). 77.27% of maintained schools responding to the consultation also supported a contribution by maintained schools towards severance costs (to be applied at a rate of £2.50 per pupil, approx. £150k in total). In relation to the school funding formula, option one was preferred by the majority that expressed a preference 61.64%).

### Recommendations

4. Schools Forum is asked to consider and vote on a proposal to transfer 0.5% (approx. £3.49m) from the schools block to the high needs block in 2024/25.
  - All Schools Forum members may vote on this proposal.

- It is a Schools Forum decision on whether to accept this proposal. In the event that Schools Forum does not agree, the DfE are able to adjudicate if the local authority requests this.
5. Maintained school members of Schools Forum are asked to consider and vote on a proposal for a contribution in 2024/25 by maintained schools towards the severance costs of maintained school staff, to be applied as a per-pupil amount of £2.50.
- Voting on this proposal is limited to maintained primary and secondary school members.
  - It is a Schools Forum decision on whether to accept this proposal. In the event that Schools Forum does not agree, the DfE are able to adjudicate if the local authority requests this.
6. Schools Forum is asked to consider and provide their views on the schools funding formula for 2024/25.
- The local authority is required to consult with Schools Forum on the funding formula, however the local authority retains the final decision on the formula to be used.



## **1 Purpose of this report**

- 1.1 This report updates Schools Forum on the outcome of the consultation with maintained schools and academies on school funding arrangements for 2024/25, and requests decisions and views on a number of matters from Schools Forum members. This is in those members' capacity as representatives of the group that has elected them, whilst taking a strategic view across the whole education estate.
- 1.2 A further report will be brought to Schools Forum in January 2024 to confirm the final school funding allocations for 2024/25.

## **2 Background information**

- 2.1 The Dedicated Schools Grant (DSG) is allocated in four blocks: schools, high needs, early years and central schools services. The ESFA uses the national funding formula (NFF) to calculate the blocks within the DSG that are allocated to local authorities. Local authorities continue to have some flexibility in how this funding is allocated to schools, within the constraints set out by the ESFA.
- 2.2 The ESFA has not confirmed the date that the NFF will be fully implemented so it is possible there could be further transitional years beyond 2024/25. However, the government has reaffirmed their intention to move as soon as possible to a hard NFF where school budgets are set on the basis of a single national formula and local authorities are no longer involved in this decision.
- 2.3 The council recently held a consultation on school funding arrangements for 2024/25, between 17<sup>th</sup> October and 8<sup>th</sup> November 2023. During the consultation period schools were provided with background information and figures to demonstrate the impact of the proposals, a briefing session was held, and any queries received from individual schools were responded to. A copy of the consultation documents issued to schools is attached as an appendix to this report.
- 2.4 It should be noted that the options and figures within the consultation and this report have been calculated based on October 2022 pupil data, which was the basis for the indicative funding published by the ESFA for consultation purposes. The final local authority allocations will be confirmed in December 2023 and will take into account October 2023 pupil data.
- 2.5 The proposals in this report are therefore subject to change prior to the deadline for confirming final funding allocations to the ESFA on 19th January 2024. A Schools Forum meeting has been arranged on 16th January ahead of this deadline, where the full final proposals will be confirmed.

## **3 Main issues**

### **3.1 Summary of consultation**

- 3.1.1 Of the 267 schools consulted with, 73 responses were received (compared to 63 the previous year). Comments and key themes from the responses have been summarised in the relevant sections below. The question regarding severance was applicable to maintained schools only.

3.1.2 The council consulted on the following proposals:

- a) A 0.5% transfer between from the schools block to the high needs block in 2024/25 estimated to be £3.49m.
- b) Two options for funding formula for 2024/25, taking into account the proposed transfer out of the schools block of approx. £3.49m.
  - Option 1: A cap on gains of 1.06%. All other factors are in line with the national funding formula, including the minimum funding guarantee of 0.5%.
  - Option 2: A reduced minimum funding guarantee of 0% and an increased cap on gains of 1.09%. All other factors are in line with the national funding formula.
- c) A contribution in 2024/25 by maintained schools to be applied as a per pupil amount of £2.50 estimated to be a total of £150k.

3.1.3 94.52% of respondents supported the transfer from the schools block to the high needs block. 77.27% supported the contribution by maintained schools towards severance costs in 2024/25. In relation to the funding formula, the majority (61.64%) voted for option one.

3.1.4 Further detail on each of the proposals and consultation responses are provided below.

## **3.2 Transfer from the schools block to the high needs block**

### Background

3.2.1 The council consulted on a 0.5% (approx £3.49m) transfer from the schools block to the high needs block. Detailed information was provided to schools on the background to our proposals as part of the consultation document and the briefing session. The full consultation document is attached as an appendix to this report, but in summary the key points were:

- The ESFA expects most movements from schools block will be due to pressures on high needs budgets.
- The high needs block in Leeds, in common with many around the country, is under considerable pressure due to increasing high needs demand and complexity of children's needs.
- The most recent projection for the high needs block is an overspend of £0.924m in 2023/24; this represents 0.18% of the total high needs budget. It's important to note that if the transfer from the schools block had not been done in 2023/24, the projection would be an overspend of £4.262m. In 2022/23 the high needs block had an underspend of £6.846m, this would have been £3.719m had the transfer not been done in 2022/23.
- Spending on the high needs block is currently forecast to be £14.4m more than the funding available for 2024/25, increasing to a £31.1m deficit projected by 31st March 2026.

- Although the provisional 2024/25 high needs block allocation for Leeds shows an increase in funding of £6.47m compared to 2023/24, there is still a cap on gains in place. If the cap on gains was not in place the council would gain an additional £2.92m.
- The local authority can transfer up to 0.5% (approximately £3.49m) from the schools block with Schools Forum approval, with the option to transfer more with approval from the DfE.
- The increase in the provisional 2024/25 schools block allocation for Leeds is expected to be approximately £12.97m (1.4%) compared to 2023/24 (before any pupil growth which will be confirmed in December). The transfer of 0.5% out of the schools block in 2024/25 will leave an increase in the schools formula of £9.48m.
- The transfer to the high needs block will not be used to fund other council services and will only be used to fund high needs costs.

3.2.2 Since the pandemic, Local Authorities across the UK have seen increases in demand for EHCPs and in the case of Leeds City Council that has reflected a 60% increase in applications for EHCPs, as well as an increase to the complexity of many cases. Despite council investment into the service, the service has struggled to meet this rising demand. An end-to-end review of the Council's approach to EHCPs is being undertaken, the review is engaging with children, families, schools and settings to gather their vital feedback to ensure that our processes are as efficient as possible and maximising the resources we do have. The review process will seek to deliver improvements to the Council's arrangements for the delivery of EHCPs which will ensure that Council processes support the fulfilment of its legal duty and are centred on the needs of children and young people within Leeds who need the most support

#### Consultation responses

3.2.3 73 responses were received to this proposal. 69 (94.52%) supported the proposal and 4 (5.48%) did not. Some respondents provided comments; in general those in favour of the proposal acknowledged the increasing and significant additional needs pressures across the city. A respondent opposing the proposal made reference to the high needs underspend in 2022/23 and as such deemed the previous years block transfer was unnecessary. Further concerns were raised over the future projections, lack of clarity on future budget assumptions and the respondent felt that schools had not received sufficient opportunity to offer a counter argument to the proposals within the consultation.

#### 3.2.4 Proposal

3.2.5 The majority of respondents supported our original proposal, and therefore the local authority is still proposing to transfer 0.5% (approximately £3.49m) from the schools block to the high needs block.

3.2.6 The movement of up to 0.5% from the schools block is a Schools Forum decision. In the event that Schools Forum does not agree with our proposals, the DfE can adjudicate if the local authority wanted to request this.

3.2.7 The proposed transfer from the schools block to the high needs block only relates to proposals for 2024/25. In 2025/26 it is possible that a further request could also be

made to transfer funds from the schools block to the high needs block, providing this is still allowed by the DfE. This would depend on the savings that can be made through other means or if additional funding was forthcoming. If a further transfer was required, it would form part of a separate consultation during the next financial year.

3.2.8 The council is required by the DfE to present a range of evidence to support our proposal to transfer funding from the schools block to the high needs block.

### **3.3 Schools funding formula**

#### Background to the proposal

3.3.1 The council is required to apply a funding formula in order to allocate schools block funding to schools. The ESFA sets a range of factors we are able to use in the formula. Within each of these factors there are also certain restrictions that can apply, for example the weightings that can be used for each factor, minimum funding levels and a cap on gains.

3.3.2 If the council implements the 0.5% transfer from the schools block, we cannot fully move to the national funding formula as not enough funding will remain. However as previously noted due to the increases in the council's provisional schools block allocation there would still be £9.48m additional funding available for schools in 2024/25 compared to 2023/24.

3.3.3 Given the complexity of the possible formula factors there are a significant number of formula options that it would have been possible to model and the council looked at a number of alternative options. Using the principles established in previous years for the formula we have modelled two options for 2024/25 which vary the minimum funding guarantee and cap on gains. These are:

- Option 1: A cap on gains of 1.06%. All other factors are in line with the National Funding Formula (see table below), including the minimum funding guarantee of 0.5%.
- Option 2: A reduced minimum funding guarantee of 0% and an increased cap on gains of 1.09%. All other factors are in line with the National Funding Formula (see table below).

3.3.4 The options are summarised in the table below, with school level information provided in the appendix.

Funding formula factor	2023/24 (for comparison)		2024/25		
	National Funding Formula	Leeds funding formula	National Funding Formula	Leeds option 1	Leeds option 2
Minimum funding guarantee <sup>1</sup>	0.5% per pupil	0.5% per pupil	0.5% per pupil	0.5% per pupil	0% per pupil
Cap on gains <sup>1,2</sup>	No cap	5.39% per pupil	No cap	1.06%	1.09%
Minimum per pupil funding level <sup>1,2</sup>	Secondary £5,715 Primary £4,405	Secondary £5,715 Primary £4,405	Secondary £5,995 Primary £4,610	Secondary £5,995 Primary £4,610	Secondary £5,995 Primary £4,610

<sup>1</sup> Excluding premises-based funding

<sup>2</sup> The minimum per pupil funding level cannot be subject to the cap on gains

3.3.5 Our final funding allocation for 2024/25 will be confirmed by the ESFA in mid to late December 2023. The funding increases built into our current proposal are based on the ESFA's indicative local authority allocations which use October 2022 pupil data. As a result, the affordability of our proposal could change once the final allocation is confirmed, if there is a significant change in pupil demographics.

#### Consultation responses

3.3.6 73 responses were received on the funding formula:

- 45 (61.64%) preferred option one
- 28 (38.36%) preferred option two

3.3.7 The schools benefiting most from each of the options are as follow:

- Option one is significantly better for 8 schools (3%)
- Option two is marginally best for 192 schools (72%)
- There is no difference between the options for 67 schools (25%)

3.3.8 Comments from schools generally supported option one on the basis that this option is as close to the NFF as possible

#### Proposal

3.3.9 The local authority is responsible for proposing the schools funding formula and for consulting on this with Schools Forum. This proposal is only for 2024/25, and the council will be required to consult again next year on the 2025/26 funding formula if the National Funding Formula will not be fully implemented at that time.

- 3.3.10 Schools Forum has previously expressed a preference to move as close as possible to the National Funding Formula, which is best represented by the first option (0.5% minimum funding guarantee and 1.06% cap on gains), this did receive the majority of support in the consultation (61.64%).
- 3.3.11 The final funding formula for 2024/25 will be approved in line with the council's decision-making framework and we will submit details of the funding allocations for schools to the ESFA by their deadline of 19th January 2024.
- 3.3.12 In addition to providing funding based on the October 2023 census, the ESFA provides an allocation for growth in the formula based on changes between the October 2022 and October 2023 census. This growth allocation is used to create a Growth Fund which provides support for costs incurred by schools that are being established or extended to meet basic need and where admission numbers are increased. The allocation is also used to fund estimated pupil numbers in the formula for new schools that have opened in the last seven years and are still adding year groups. The council's growth allocation for 2024/25 will not be confirmed until December. This is an area of risk as if the amount of growth funding allocated to Leeds is insufficient compared to projected demand then this may reduce funding available to be delivered to schools through the formula. If this was the case, then we will report details to Schools Forum at the meeting on 16<sup>th</sup> January 2024.
- 3.3.13 For the first time in 2024 to 2025 the ESFA will also provide an allocation for falling rolls. Falling rolls funding will be distributed on the basis of the reduction in pupil numbers that local authorities experience for each year. It will be based on the observed differences between the primary and secondary numbers on roll in each local authority between the October 2022 and October 2023 school censuses. Local authorities will continue to have discretion over whether to operate a falling rolls fund. Where local authorities operate a fund, they will only be able to provide funding where school capacity data 2022 (SCAP) shows that school places will be required in the subsequent three to five years.
- 3.3.14 If a Local authority decides to operate a falling rolls fund then the schools forum should agree both the value of the fund and the criteria for allocation, and the local authority should consult Schools Forum before expenditure is incurred. Details will be brought to the Schools Forum meeting in 16<sup>th</sup> January 2024 on any proposed falling rolls fund, the proposed amount and criteria for allocation to schools of the 2024/25 falling rolls fund.
- 3.3.15 In relation to PFI schools, the DfE provides additional PFI funding in the council's allocation to recognise the additional costs associated with these contracts, which the council then distributes to PFI schools through the funding formula. For 2024/25 we will again be requesting permission from the DfE to exclude any PFI funding delivered through the formula from the calculation of the minimum funding guarantee. This will ensure that the per-pupil funding for PFI schools is calculated on the same basis as non-PFI schools and that they receive the correct amount of PFI funding to support their contributions to contract costs.

### **3.4 Contribution towards severance costs for maintained schools**

#### Background to the proposal

- 3.4.1 The council consulted on a proposal for maintained schools to contribute £2.50 per maintained school pupil which is an estimated total of £140k towards the severance costs of maintained school staff, which are charged to the council.
- 3.4.2 This is in line with 2023/24 when Schools Forum agreed that maintained schools would contribute £2.50 per maintained school pupil to severance costs, following support for this proposal by the majority of maintained schools that responded to the consultation.
- 3.4.3 Current legislation states that premature retirement costs are chargeable to the school's delegated budget while redundancy costs are charged to the local authority's budget.
- 3.4.4 For 2024/25 we are proposing that maintained schools contribute towards severance costs as they are driven by school decisions, although we appreciate that this may be as a result of financial pressures. However, this approach is equitable with the treatment of academies, who no longer receive funding for severance costs and are responsible for meeting this cost themselves.

#### Consultation responses

- 3.4.5 44 responses were received from maintained schools to this proposal; 34 (79.27%) supported the proposal and 10 (22.73%) did not.

#### Proposal

- 3.4.6 As the majority of maintained schools responding to the consultation supported our proposal, the council is requesting that maintained schools contribute £2.50 per pupil (approx £150k) towards severance costs for maintained schools.
- 3.4.7 Maintained school members of Schools Forum are able to decide on whether to accept this proposal. In the event that Schools Forum does not agree with our proposal, the DfE are able to adjudicate if the council wanted to request this.

## **4 Recommendations**

- 4.1 Schools Forum is asked to consider and vote on a proposal to transfer 0.5% from the schools block to the high needs block in 2024/25.
- All Schools Forum members may vote on this proposal.
  - It is a Schools Forum decision on whether to accept this proposal. In the event that Schools Forum does not agree, the DfE are able to adjudicate if the local authority requests this.
- 4.2 Maintained school members of Schools Forum are asked to consider and vote on a proposal for a contribution in 2024/25 by maintained schools towards the severance costs of maintained school staff, to be applied as a per-pupil amount of £2.50.
- Voting on this proposal is limited to maintained primary and secondary school members.

- It is a Schools Forum decision on whether to accept this proposal. In the event that Schools Forum does not agree, the DfE are able to adjudicate if the local authority requests this.

4.3 Schools Forum is asked to consider and provide their views on the schools funding formula for 2024/25.

- The local authority is required to consult with Schools Forum on the funding formula, however the local authority retains the final decision on the formula to be used.



	Before High Needs Transfer Option 1	Before High Needs Transfer Option 2	After High Needs Transfer Option 1	After High Needs Transfer Option 2
Cap on gains	2.82%	3.16%	1.06%	1.09%
Minimum Funding Guaranteee (MFG)	0.50%	0.00%	0.50%	0.00%

Minimum Per Pupil Funding Levels (cannot be capped below this level under either option)	
Primary	£4,610
Secondary	£5,995

2023/24 local funding formula

School Name	Is the school new and growing in 24-25?	Funded Pupils Oct 22	Formula Allocation 23-24	MSAG 23/24	Total Funding
See explanatory notes at end of table					
	3	1	2		

National Funding Formula indicative figures, published by the ESFA

NFF Pupil Numbers	NFF Allocation
	6

2024/25 local funding formula

Illustrative Funded Pupils Oct 23	Draft Funding Allocation if no high needs transfer Option 1	Draft Funding Allocation if no high needs transfer Option 2	Draft Funding Allocation after high needs transfer Option 1	Draft Funding Allocation after high needs transfer Option 2
	2	2	2,4	2,4

Per pupil funding 2024/25 = (total funding less premises costs) /funded pupils  
 Schools receiving the Minimum Per Pupil Funding are shaded blue

Option 1	Option 2
2,4	2,4

Total funding gains compared to 2023/24, after high needs transfer (including premises funding but before delegation or severance contributions for maintained schools)

Option 1	Option 2
2,4	2,4

School Name	Is the school new and growing in 24-25?	Funded Pupils Oct 22	Formula Allocation 23-24	MSAG 23/24	Total Funding
<b>Maintained Primary Schools</b>					
Aberford Church of England Voluntary Controlled Primary School		107	£570,508	£18,910	£589,418
Adel Primary School		209	£954,685	£31,570	£986,255
Adel St John the Baptist Church of England Primary School		208	£932,217	£31,347	£963,564
All Saint's Richmond Hill Church of England Primary School		209	£1,214,844	£41,140	£1,255,984
Allerton CofE Primary School		619	£2,914,718	£97,011	£3,011,728
Alwoodley Primary School		420	£1,894,142	£62,612	£1,956,754
Aquith Primary School		396	£1,937,297	£59,236	£1,996,532
Bankside Primary School		587	£3,221,460	£95,386	£3,316,847
Bardsey Primary School		190	£847,086	£27,957	£875,043
Barwick-in-Elmet Church of England Voluntary Controlled Primary School		197	£900,824	£30,142	£930,965
Beechwood Primary School		419	£2,281,498	£76,015	£2,357,513
Beecroft Primary School		301	£1,533,289	£46,577	£1,579,866
Beeston Hill St Luke's Church of England Primary School		406	£2,139,718	£65,211	£2,204,929
Beeston Primary School		618	£3,006,694	£100,948	£3,107,643
Birchfield Primary School		206	£989,083	£31,629	£1,020,712
Blenheim Primary School		416	£2,135,280	£71,602	£2,206,882
Bracken Edge Primary School		400	£2,107,929	£67,513	£2,175,442
Bramham Primary School		193	£868,377	£28,626	£897,003
Bramley St Peter's Church of England Primary School		361	£1,872,288	£61,623	£1,933,911
Broadgate Primary School		420	£1,944,953	£64,276	£2,009,229
Brodetsky Primary School		210	£942,306	£31,481	£973,787
Brudenell Primary School		249	£1,380,870	£42,260	£1,423,130
Burley St Matthias Church of England Voluntary Controlled Primary School		192	£1,105,947	£38,908	£1,144,855
Calverley Church of England Voluntary Aided Primary School		413	£1,849,217	£56,058	£1,905,275
Carlton Primary School		311	£1,394,905	£44,334	£1,439,239
Castleton Primary School		378	£2,120,979	£69,471	£2,190,450
Chapel Allerton Primary School		445	£1,999,393	£65,172	£2,064,565
Churchwell Primary School		417	£1,875,797	£58,094	£1,933,891
Clappage Primary School		390	£2,014,792	£66,947	£2,081,739
Cobden Primary School		196	£1,155,034	£40,841	£1,195,874
Collingham Lady Elizabeth Hastings' Church of England Primary School		208	£919,414	£30,307	£949,721
Cookridge Holy Trinity Church of England Primary School		411	£1,815,882	£56,548	£1,872,430
Cookridge Primary School		311	£1,665,207	£48,807	£1,714,014
Corpus Christi Catholic Primary School		273	£1,448,893	£47,613	£1,496,506
Cross Gates Primary School		204	£1,089,156	£38,776	£1,127,933
Crossley Street Primary School		208	£933,661	£31,035	£964,696
Deighton Gates Primary School		210	£928,875	£30,753	£959,628
Drighlington Primary School		366	£1,654,979	£54,001	£1,708,980
Farsley Fairfield Primary School		409	£1,834,397	£58,286	£1,892,683
Farsley Springbank Primary School		417	£1,870,165	£56,846	£1,927,011
Fieldhead Carr Primary School		326	£1,609,440	£54,129	£1,663,568
Five Lanes Primary School		417	£2,155,818	£64,647	£2,220,465
Fountain Primary School		391	£1,776,441	£60,617	£1,837,058
Gildersome Primary School		341	£1,578,420	£52,169	£1,630,590
Gledhow Primary School		624	£2,807,088	£85,644	£2,892,732
Grange Farm Primary School		416	£2,243,692	£77,427	£2,321,119
Great Preston VC CofE Primary School		206	£976,870	£32,045	£1,008,915
Greenhill Primary School		371	£1,919,799	£65,206	£1,985,005
Greenmount Primary School		418	£2,234,489	£69,759	£2,304,248
Greenside Primary School		302	£1,350,427	£44,615	£1,395,042
Grimes Dyke Primary School		219	£1,255,851	£42,850	£1,298,701
Guisley Primary School		382	£1,695,041	£54,969	£1,750,010
Harehills Primary School		629	£3,385,094	£107,250	£3,492,345
Harewood Church of England Voluntary Controlled Primary School		100	£533,164	£16,933	£550,096
Hawthorn Church of England Primary School		105	£509,855	£17,528	£527,383
Hawthorn Wood Primary School		319	£1,723,932	£58,496	£1,782,428
Highfield Primary School		420	£1,890,122	£57,515	£1,947,638
Hollybush Primary		391	£2,180,255	£71,747	£2,252,002
Holy Family Catholic Primary School		188	£1,045,607	£34,064	£1,079,670
Horsforth Featherbank Primary School		210	£942,937	£32,209	£975,146
Horsforth Newlithes Primary School		421	£1,882,665	£56,282	£1,938,947
Hovingham Primary School		657	£3,530,808	£110,375	£3,641,183
Hugh Gaitkell Primary School		517	£2,628,977	£84,767	£2,713,744
Hunslet Carr Primary School		356	£1,945,177	£66,437	£2,011,614
Hunslet Moor Primary School		418	£2,281,447	£71,216	£2,352,662
Ingram Road Primary School		298	£1,808,024	£54,749	£1,862,773
Ireland Wood Primary School		412	£1,955,483	£65,821	£2,021,303
Iveson Primary School		351	£1,759,670	£61,057	£1,820,727
Kerr Mackie Primary School		405	£1,869,511	£58,642	£1,928,154

107	£623,414	
209	£1,007,517	
208	£983,750	
209	£1,299,915	
619	£3,073,868	
420	£2,001,233	
396	£2,061,247	
587	£3,394,595	
190	£889,486	
197	£945,172	
419	£2,401,044	
301	£1,598,625	
406	£2,232,919	
618	£3,170,395	
206	£1,044,120	
416	£2,238,905	
400	£2,235,293	
193	£907,877	
361	£1,968,061	
420	£2,045,019	
210	£994,367	
249	£1,452,499	
192	£1,233,148	
413	£1,938,583	
311	£1,463,209	
378	£2,252,541	
445	£2,096,513	
417	£1,964,610	
390	£2,133,172	
196	£1,249,108	
208	£962,199	
411	£1,900,955	
311	£1,771,870	
273	£1,528,513	
204	£1,145,671	
208	£980,746	
210	£971,319	
366	£1,732,060	
409	£1,920,050	
417	£1,960,808	
326	£1,714,126	
417	£2,274,369	
391	£1,870,518	
341	£1,653,851	
624	£2,946,272	
416	£2,354,825	
206	£1,025,900	
371	£2,028,960	
418	£2,372,056	
302	£1,411,888	
219	£1,325,319	
382	£1,771,772	
629	£3,566,070	
100	£573,024	
105	£539,699	
319	£1,810,551	
420	£1,976,307	
391	£2,231,690	
188	£1,098,745	
210	£995,966	
421	£1,969,226	
657	£3,738,953	
517	£2,729,421	
356	£2,048,732	
418	£2,405,366	
298	£1,882,183	
412	£2,065,332	
351	£1,853,796	
405	£1,972,549	

107	£602,205	£603,618
209	£1,004,425	£1,004,425
208	£977,296	£977,296
209	£1,287,182	£1,290,976
619	£3,061,942	£3,061,942
420	£1,988,583	£1,988,583
396	£2,048,432	£2,048,432
587	£3,382,329	£3,382,329
190	£902,098	£902,098
197	£945,179	£945,179
419	£2,391,790	£2,391,790
301	£1,607,669	£1,607,669
406	£2,233,519	£2,233,519
618	£3,153,974	£3,153,974
206	£1,036,755	£1,036,755
416	£2,233,251	£2,233,251
400	£2,217,039	£2,217,039
193	£902,354	£899,916
361	£1,963,190	£1,963,190
420	£2,042,487	£2,042,487
210	£987,022	£987,022
249	£1,444,893	£1,444,893
192	£1,174,929	£1,178,315
413	£1,939,095	£1,939,095
311	£1,463,209	£1,463,209
378	£2,261,970	£2,268,856
445	£2,096,513	£2,096,513
417	£1,964,610	£1,964,610
390	£2,111,806	£2,111,806
196	£1,227,058	£1,230,610
208	£962,285	£962,285
411	£1,900,955	£1,900,955
311	£1,751,545	£1,755,921
273	£1,518,308	£1,518,308
204	£1,144,697	£1,144,697
208	£980,746	£980,746
210	£971,402	£971,402
366	£1,732,060	£1,732,060
409	£1,920,050	£1,920,050
417	£1,960,808	£1,960,808
326	£1,692,885	£1,692,885
417	£2,275,452	£2,275,452
391	£1,867,306	£1,867,306
341	£1,659,204	£1,659,204
624	£2,946,272	£2,946,272
416	£2,354,825	£2,354,825
206	£1,025,910	£1,025,910
371	£2,017,969	£2,017,969
418	£2,318,544	£2,307,832
302	£1,413,883	£1,413,883
219	£1,319,364	£1,319,364
382	£1,771,772	£1,771,772
629	£3,546,608	£3,546,608
100	£562,518	£563,776
105	£535,179	£535,179
319	£1,810,551	£1,810,551
420	£1,976,307	£1,976,307
391	£2,268,800	£2,268,800
188	£1,095,276	£1,095,276
210	£990,719	£990,719
421	£1,969,226	£1,969,226
657	£3,703,019	£3,703,019
517	£2,750,820	£2,750,820
356	£2,043,809	£2,043,809
418	£2,391,205	£2,391,205
298	£1,892,508	£1,892,508
412	£2,051,116	£2,051,116
351	£1,847,420	£1,847,420
405	£1,959,948	£1,959,948

£594,877	£594,985
£999,516	£999,729
£977,296	£972,654
£1,267,500	£1,267,788
£3,049,436	£3,050,166
£1,979,872	£1,980,335
£2,028,650	£2,028,650
£3,389,267	£3,370,069
£887,594	£897,784
£940,481	£940,682
£2,381,924	£2,382,496
£1,601,350	£1,601,719
£2,224,349	£2,224,880
£3,140,857	£3,141,622
£1,031,634	£1,031,857
£2,229,249	£2,229,782
£2,207,608	£2,208,123
£899,354	£899,916
£1,954,848	£1,955,305
£2,033,664	£2,034,139
£982,116	£982,331

Kirkstall St Stephen's Church of England (VA) Primary School	198	£1,026,449	£34,318	<b>£1,060,767</b>	198	£1,080,429				£1,076,167	£1,076,167	£1,071,008	£1,071,247	£5,392	£5,393	£10,242	£10,480
Kirkstall Valley Primary School	201	£1,091,939	£37,171	<b>£1,129,110</b>	201	£1,148,666	£1,148,666			£1,143,245	£1,143,245	£1,143,004	£1,143,455	£5,556	£5,558	£14,095	£14,345
Lady E Hastings CofE Primary School	134	£651,981	£21,395	<b>£673,377</b>	134	£685,206	£683,294	£679,318	£679,454	£679,318	£679,454	£679,318	£679,454	£5,049	£5,050	£5,941	£6,077
Lady Elizabeth Hastings' CofE VA Primary School, Thorp Arch	115	£577,348	£18,822	<b>£596,170</b>	115	£600,633	£604,931	£604,931	£601,402	£601,402	£601,520	£601,402	£601,520	£5,206	£5,207	£5,232	£5,351
Lane End Primary School	402	£2,188,701	£69,311	<b>£2,258,012</b>	402	£2,304,911	£2,293,037	£2,293,037	£2,283,476	£2,284,022	£2,284,022	£2,283,476	£2,284,022	£5,647	£5,649	£25,465	£26,010
Lawns Park Primary School	210	£1,092,481	£36,474	<b>£1,128,955</b>	210	£1,153,490	£1,148,599	£1,148,599	£1,143,304	£1,143,555	£1,143,555	£1,143,304	£1,143,555	£5,318	£5,319	£14,349	£14,600
Little London Community Primary School	394	£2,113,409	£67,527	<b>£2,180,936</b>	394	£2,224,236	£2,210,149	£2,210,149	£2,200,727	£2,201,251	£2,201,251	£2,200,727	£2,201,251	£5,551	£5,552	£19,791	£20,315
Low Road Primary School	181	£993,687	£29,902	<b>£1,023,589</b>	181	£1,047,254	£1,038,806	£1,038,806	£1,034,916	£1,035,140	£1,035,140	£1,034,916	£1,035,140	£5,591	£5,592	£11,327	£11,551
Lower Wortley Primary School	313	£1,780,750	£49,045	<b>£1,829,795</b>	313	£1,886,252	£1,878,496	£1,878,496	£1,850,213	£1,850,560	£1,850,560	£1,850,213	£1,850,560	£4,777	£4,778	£20,419	£20,766
Lowton Primary School	207	£952,298	£31,956	<b>£984,254</b>	207	£1,001,526	£999,104	£999,104	£999,104	£999,104	£999,104	£999,104	£999,104	£4,713	£4,714	£9,946	£10,161
Manston Primary School	207	£1,023,333	£36,429	<b>£1,059,762</b>	207	£1,075,622	£1,092,526	£1,092,526	£1,087,162	£1,087,401	£1,087,401	£1,087,162	£1,087,401	£5,167	£5,168	£27,400	£27,639
Meanwood Church of England Primary School	213	£941,542	£30,798	<b>£972,340</b>	213	£985,603	£985,703	£985,703	£985,703	£985,703	£985,703	£985,703	£985,703	£4,610	£4,610	£13,364	£13,364
Middleton St Mary's Church of England Voluntary Controlled Primary School	353	£1,942,111	£63,791	<b>£2,005,902</b>	353	£2,046,380	£2,036,128	£2,036,128	£2,027,771	£2,028,247	£2,028,247	£2,027,771	£2,028,247	£5,664	£5,665	£21,869	£22,345
Moor Allerton Hall Primary School	577	£2,739,803	£86,811	<b>£2,826,614</b>	577	£2,890,332	£2,888,575	£2,888,575	£2,877,059	£2,877,743	£2,877,743	£2,877,059	£2,877,743	£4,878	£4,879	£50,445	£51,129
Moorfoot Primary School	211	£938,063	£30,248	<b>£968,311</b>	211	£982,610	£982,609	£982,609	£982,609	£982,609	£982,609	£982,609	£982,609	£4,610	£4,610	£14,298	£14,298
Morley Victoria Primary School	422	£1,883,897	£61,810	<b>£1,945,707</b>	422	£1,974,900	£1,974,488	£1,974,488	£1,974,488	£1,974,488	£1,974,488	£1,974,488	£1,974,488	£4,610	£4,610	£28,781	£28,781
Ninelands Primary School	417	£1,845,567	£57,574	<b>£1,903,141</b>	417	£1,931,458	£1,928,360	£1,928,360	£1,928,360	£1,928,360	£1,928,360	£1,928,360	£1,928,360	£4,610	£4,610	£25,219	£25,219
Olley All Saints CofE Primary School	219	£990,653	£32,760	<b>£1,023,413</b>	219	£1,045,499	£1,039,129	£1,039,129	£1,039,129	£1,039,129	£1,039,129	£1,039,129	£1,039,129	£4,625	£4,626	£10,712	£10,936
Olley the Whartons Primary School	194	£878,740	£29,577	<b>£908,317</b>	194	£921,875	£922,584	£922,584	£917,957	£918,152	£918,152	£917,957	£918,152	£4,633	£4,634	£9,640	£9,835
Oulton Primary School	305	£1,573,942	£52,357	<b>£1,626,299</b>	305	£1,647,786	£1,654,108	£1,654,108	£1,647,116	£1,647,492	£1,647,492	£1,647,116	£1,647,492	£5,266	£5,267	£20,817	£21,193
Our Lady of Good Counsel Catholic Primary School	205	£1,075,941	£34,319	<b>£1,110,259</b>	205	£1,127,569	£1,126,339	£1,126,339	£1,121,081	£1,121,331	£1,121,331	£1,121,081	£1,121,331	£5,450	£5,451	£10,821	£11,072
Park Spring Primary School	399	£1,990,501	£66,666	<b>£2,057,166</b>	399	£2,107,609	£2,092,604	£2,092,604	£2,083,763	£2,084,247	£2,084,247	£2,083,763	£2,084,247	£5,089	£5,090	£26,597	£27,071
Parklands Primary School	392	£2,137,682	£68,745	<b>£2,206,427</b>	392	£2,229,471	£2,221,278	£2,221,278	£2,221,278	£2,221,278	£2,221,278	£2,221,278	£2,221,278	£5,598	£5,598	£14,851	£14,851
Pool-in-Wharfedale Church of England Voluntary Controlled Primary School	195	£881,230	£29,176	<b>£910,406</b>	195	£917,439	£917,313	£917,313	£917,313	£917,313	£917,313	£917,313	£917,313	£4,610	£4,610	£6,907	£6,907
Primrose Lane Primary School	194	£880,477	£29,993	<b>£910,470</b>	194	£916,227	£923,531	£923,531	£918,864	£919,063	£919,063	£918,864	£919,063	£4,716	£4,718	£8,394	£8,593
Pudsey Bolton Royd Primary School	393	£2,287,265	£59,815	<b>£2,347,080</b>	393	£2,436,233	£2,405,154	£2,405,154	£2,374,016	£2,374,472	£2,374,472	£2,374,016	£2,374,472	£4,889	£4,890	£26,937	£27,393
Quarry Mount Primary School	198	£1,151,563	£37,438	<b>£1,189,002</b>	198	£1,217,787	£1,206,169	£1,206,169	£1,200,614	£1,200,886	£1,200,886	£1,200,614	£1,200,886	£6,049	£6,050	£11,613	£11,884
Queensway Primary School	139	£760,565	£28,232	<b>£788,796</b>	139	£829,920	£806,935	£809,141	£795,487	£795,655	£795,655	£795,487	£795,655	£5,693	£5,694	£6,691	£6,858
Radwin Littlemoor Primary School	313	£1,597,088	£44,676	<b>£1,641,764</b>	313	£1,684,349	£1,684,349	£1,684,349	£1,684,349	£1,684,349	£1,684,349	£1,684,349	£1,684,349	£4,610	£4,610	£42,585	£42,585
Rawton St Peter's Church of England Voluntary Controlled Primary School	320	£1,431,431	£43,845	<b>£1,475,276</b>	320	£1,499,777	£1,499,776	£1,499,776	£1,499,776	£1,499,776	£1,499,776	£1,499,776	£1,499,776	£4,610	£4,610	£24,499	£24,499
Robin Hood Primary School	409	£1,833,811	£58,078	<b>£1,891,890</b>	409	£1,921,483	£1,921,483	£1,921,483	£1,921,483	£1,921,483	£1,921,483	£1,921,483	£1,921,483	£4,610	£4,610	£29,593	£29,593
Rosebank Primary School	292	£1,622,681	£52,162	<b>£1,674,843</b>	292	£1,701,165	£1,699,481	£1,699,481	£1,691,922	£1,692,318	£1,692,318	£1,691,922	£1,692,318	£5,778	£5,779	£17,078	£17,475
Rothwell Primary School	307	£1,673,785	£46,979	<b>£1,720,764</b>	307	£1,775,776	£1,767,151	£1,767,151	£1,740,487	£1,740,814	£1,740,814	£1,740,487	£1,740,814	£4,616	£4,617	£19,723	£20,051
Rothwell St Mary's RC Primary School	210	£947,618	£31,481	<b>£979,099</b>	210	£994,478	£993,253	£993,253	£988,369	£988,586	£988,586	£988,369	£988,586	£4,689	£4,690	£9,487	£9,487
Roundhay St John's Church of England Primary School	211	£978,561	£32,016	<b>£1,010,577</b>	211	£1,032,360	£1,025,502	£1,025,502	£1,020,477	£1,020,702	£1,020,702	£1,020,477	£1,020,702	£4,813	£4,814	£9,900	£10,124
Rufford Park Primary School	286	£1,430,802	£43,543	<b>£1,474,345</b>	286	£1,507,813	£1,507,585	£1,507,585	£1,507,585	£1,507,585	£1,507,585	£1,507,585	£1,507,585	£4,610	£4,610	£33,240	£33,240
Scholes (Elmet) Primary School	307	£1,378,959	£44,378	<b>£1,423,337</b>	307	£1,445,942	£1,445,942	£1,445,942	£1,445,942	£1,445,942	£1,445,942	£1,445,942	£1,445,942	£4,610	£4,610	£22,605	£22,605
Seacroft Grange Primary School	204	£1,241,201	£42,313	<b>£1,283,514</b>	204	£1,297,490	£1,299,737	£1,299,737	£1,293,501	£1,293,793	£1,293,793	£1,293,501	£1,293,793	£6,258	£6,260	£9,987	£10,279
Seven Hills Primary School	417	£1,985,130	£64,439	<b>£2,049,569</b>	417	£2,091,204	£2,083,248	£2,083,248	£2,074,339	£2,074,823	£2,074,823	£2,074,339	£2,074,823	£4,873	£4,874	£24,770	£25,254
Shadwell Primary School	206	£927,427	£29,341	<b>£956,768</b>	206	£969,746	£969,745	£969,745	£969,745	£969,745	£969,745	£969,745	£969,745	£4,610	£4,610	£12,977	£12,977
Shakespeare Primary School	623	£3,510,872	£108,409	<b>£3,619,281</b>	623	£3,695,217	£3,639,932	£3,639,932	£3,625,362	£3,626,242	£3,626,242	£3,625,362	£3,626,242	£5,746	£5,747	£6,082	£6,961
Sharp Lane Primary School	561	£2,708,360	£88,443	<b>£2,796,804</b>	561	£2,834,973	£2,841,988	£2,841,988	£2,840,890	£2,841,564	£2,841,564	£2,840,890	£2,841,564	£4,944	£4,945	£34,087	£34,760
Shire Oak VC Primary School	210	£980,719	£32,313	<b>£1,013,032</b>	210	£1,019,627	£1,018,697	£1,018,697	£1,018,697	£1,018,697	£1,018,697	£1,018,697	£1,018,697	£4,749	£4,735	£5,665	£2,787
Southdyf Primary and Nursery School	369	£1,641,430	£56,998	<b>£1,698,428</b>	369	£1,710,255	£1,710,255	£1,710,255	£1,710,255	£1,710,255	£1,710,255	£1,710,255	£1,710,255	£4,610	£4,610	£11,866	£11,866
Spring Bank Primary School	183	£1,037,601	£30,972	<b>£1,068,573</b>	183	£1,101,572	£1,086,483	£1,089,196	£1,072,407	£1,072,613	£1,072,613	£1,072,407	£1,072,613	£5,148	£5,150	£3,834	£4,040
St Anthony's Catholic Primary School, Beeston	212	£1,042,848	£32,343	<b>£1,075,191</b>	212	£1,095,440	£1,091,204	£1,091,204	£1,085,829	£1,086,070	£1,086,070	£1,085,829	£1,086,070	£5,096	£5,097	£10,638	£10,879
St Bartholomew's CofE Voluntary Controlled Primary School	494	£2,675,920	£86,606	<b>£2,762,526</b>	494	£2,786,568	£2,797,057	£2,797,057	£2,786,179	£2,786,845	£2,786,845	£2,786,179	£2,786,845	£5,557	£5,558	£23,653	£24,319
St Edward's Catholic Primary School, Boston Spa	174	£769,798	£25,532	<b>£795,330</b>	174	£805,683	£805,775	£805,775	£805,775	£805,775	£805,775	£805,775	£805,775	£4,610	£4,610	£10,445	£10,445
St Francis Catholic Primary School, Morley	212	£981,221	£31,927	<b>£1,013,148</b>	212	£1,038,917	£1,028,008	£1,028,008	£1,022,923	£1,023,149	£1,023,149	£1,022,923	£1,023,149	£4,807	£4,809	£9,775	£10,001
St James' Church of England Voluntary Controlled Primary School	117	£691,446	£22,181	<b>£713,627</b>	117	£717,571	£716,352	£716,352	£716,352	£716,352	£716,352	£716,352	£716,352	£6,045	£6,020	£2,725	£4,125
St Joseph's Catholic Primary School, Hunslet	200	£1,076,467	£34,764	<b>£1,111,231</b>	200	£1,132,552	£1,127,683	£1,127,683	£1,122,151	£1,122,402	£1,122,402	£1,122,151	£1,122,402	£5,588	£5,589	£10,920	£11,171
St Joseph's Catholic Primary School, Wetherby	202	£897,089	£29,593	<b>£926,682</b>	202	£935,487	£935,598	£935,598	£93								

Bramhope Primary School		362	£1,598,476	£48,844	£1,647,320
Bramley Park Academy		257	£1,459,407	£50,909	£1,510,316
Calverley Parkside Primary School		206	£919,875	£31,317	£951,192
Christ Church Upper Armley Church of England Primary School		186	£1,047,178	£36,114	£1,083,292
Christ The King Catholic Primary School, A Voluntary Academy		160	£875,573	£29,171	£904,743
Cockburn Haigh Road Academy		100	£594,768	£20,469	£615,237
Colton Primary School		209	£926,821	£30,738	£957,559
Co-op Academy Beckfield		186	£1,023,156	£35,490	£1,058,646
Co-op Academy Brownhill		403	£2,343,429	£76,087	£2,419,516
Co-op Academy Nightingale		420	£2,398,192	£79,255	£2,477,446
Co-op Academy Oakwood		415	£2,431,594	£73,979	£2,505,573
Co-op Academy Woodlands		417	£2,422,521	£83,787	£2,506,308
Cottingley Primary Academy		252	£1,445,722	£48,754	£1,494,476
East Ardsley Primary Academy		412	£2,073,063	£60,308	£2,133,370
East Garforth Primary Academy		227	£1,023,146	£35,481	£1,058,627
Ebor Gardens Primary Academy		370	£2,073,899	£67,375	£2,141,274
Elements Primary Free School		318	£1,580,805	£52,644	£1,633,449
Green Lane Primary School	Yes	414	£1,828,739	£57,529	£1,886,268
Hill Top Primary Academy		207	£1,047,679	£31,644	£1,079,324
Hillcrest Academy		415	£2,143,382	£67,218	£2,210,600
Holy Name Catholic Voluntary Academy		205	£961,652	£32,446	£994,099
Holy Rosary and St Anne's Catholic Primary School, a Voluntary Academy		207	£1,221,179	£41,422	£1,262,601
Holy Trinity Church of England Academy, Rothwell		165	£862,000	£29,974	£891,974
Immaculate Heart of Mary Catholic Primary School, A Voluntary Academy		447	£1,975,691	£60,521	£2,036,212
Kippax Ash Tree Primary School		326	£1,888,608	£54,441	£1,943,049
Kippax Greenfield Primary School		144	£696,441	£24,354	£720,795
Kippax North Primary School		210	£936,610	£32,209	£968,819
Manor Wood Primary School Formerly Carr Manor Primary School		432	£1,957,245	£61,544	£2,018,789
Manston St James Primary Academy		382	£1,722,925	£58,401	£1,781,326
Meadowfield Primary School		373	£2,069,219	£69,084	£2,138,303
Methley Primary School		401	£2,107,325	£55,774	£2,163,099
Micklefield Church of England Voluntary Controlled Primary School		64	£449,998	£15,144	£465,143
Middleton Primary School		423	£2,297,123	£78,052	£2,375,175
Mill Field Primary School		296	£1,654,527	£55,239	£1,709,766
Morley Newlands Academy		631	£2,792,343	£94,446	£2,886,789
Park View Primary Academy		203	£1,140,469	£35,121	£1,175,589
Primley Wood Primary School		209	£1,083,208	£35,731	£1,118,939
Pudsey Primrose Hill Primary School		438	£1,937,899	£63,298	£2,001,197
Pudsey Waterloo Primary		389	£1,727,592	£58,402	£1,785,994
Raynville Academy		394	£2,004,984	£67,111	£2,072,095
Ryecroft Academy		297	£1,538,383	£53,902	£1,592,284
Sacred Heart Catholic Primary School, a Voluntary Academy		194	£1,108,250	£34,466	£1,142,715
St. Peter and Paul Catholic Primary School, a Voluntary Academy		208	£935,642	£30,411	£966,053
St Augustine's Catholic Primary School, A Voluntary Academy		403	£2,073,426	£68,598	£2,142,024
St Benedict's Catholic Primary School		203	£924,131	£30,648	£954,779
St Chad's Church of England Primary School		206	£952,534	£30,693	£983,227
St Francis of Assisi Catholic Primary School		205	£1,160,602	£38,791	£1,199,393
St Joseph's Catholic Primary School, Otley		198	£875,683	£29,420	£905,112
St Joseph's Catholic Primary School, Pudsey		298	£1,320,074	£42,163	£1,362,236
St Mary's Catholic Primary School, Horsforth		209	£923,640	£30,426	£954,066
St Marys Church of England Primary Academy		260	£1,408,091	£47,522	£1,455,612
St Paul's Catholic Primary School, a Voluntary Academy		212	£983,591	£32,863	£1,016,454
St Urban's Catholic Primary School, a Voluntary Academy		209	£965,854	£32,090	£997,944
Swillington Primary School		175	£897,388	£30,644	£928,032
Templenewsam Halton Primary School		418	£1,846,787	£61,230	£1,908,017
The Richmond Hill Academy		568	£3,232,484	£107,791	£3,340,275
Thornor Church of England Primary School		201	£895,818	£30,514	£926,332
Victoria Primary Academy		366	£1,979,015	£69,395	£2,048,410
Westerton Primary Academy		628	£2,777,399	£86,328	£2,863,727
Whitkirk Primary School		381	£1,683,630	£56,306	£1,739,936

<b>PRIMARY SUB TOTAL</b>		<b>68,000</b>	<b>339,198,046</b>	<b>11,002,141</b>	<b>350,200,187</b>
--------------------------	--	---------------	--------------------	-------------------	--------------------

	362	£1,668,820			
	257	£1,531,234			
	206	£961,426			
	186	£1,131,473			
	160	£919,168			
	100	£624,084			
	209	£967,540			
	186	£1,115,386			
	403	£2,462,696			
	420	£2,505,866			
	415	£2,572,511			
	417	£2,550,474			
	252	£1,507,015			
	412	£2,174,371			
	227	£1,071,678			
	370	£2,172,407			
	318	£1,819,859			
	414	£1,908,540			
	207	£1,107,399			
	415	£2,262,530			
	205	£1,007,287			
	207	£1,283,173			
	165	£899,921			
	447	£2,060,670			
	326	£2,044,688			
	144	£729,275			
	210	£985,077			
	432	£2,038,368			
	382	£1,798,316			
	373	£2,184,825			
	401	£2,213,794			
	64	£522,930			
	423	£2,421,195			
	296	£1,726,008			
	631	£2,908,910			
	203	£1,192,869			
	209	£1,140,430			
	438	£2,019,180			
	389	£1,810,570			
	394	£2,090,040			
	297	£1,614,480			
	194	£1,148,760			
	208	£966,932			
	403	£2,185,800			
	203	£963,412			
	206	£993,886			
	205	£1,222,577			
	198	£913,846			
	298	£1,375,500			
	209	£972,233			
	260	£1,472,181			
	212	£1,030,792			
	209	£1,013,128			
	175	£932,246			
	418	£1,926,980			
	568	£3,372,180			
	201	£946,362			
	366	£2,116,173			
	628	£2,895,080			
	381	£1,756,410			

<b>PRIMARY SUB TOTAL</b>	<b>68,025</b>	<b>357,072,623</b>
--------------------------	---------------	--------------------

	362	£1,673,223			
	257	£1,531,234			
	206	£965,054			
	186	£1,113,586			
	160	£917,825			
	100	£626,722			
	209	£971,741			
	186	£1,085,115			
	403	£2,454,776			
	420	£2,513,008			
	415	£2,564,159			
	417	£2,557,554			
	252	£1,528,298			
	412	£2,185,532			
	227	£1,073,615			
	370	£2,172,407			
	318	£1,656,617			
	414	£1,914,372			
	207	£1,102,941			
	415	£2,221,821			
	205	£1,008,273			
	207	£1,288,932			
	165	£904,851			
	447	£2,066,916			
	326	£1,946,438			
	144	£731,120			
	210	£982,626			
	432	£2,038,368			
	382	£1,807,355			
	373	£2,169,957			
	401	£2,225,979			
	64	£461,389			
	423	£2,409,465			
	296	£1,734,640			
	631	£2,923,517			
	203	£1,192,761			
	209	£1,135,591			
	438	£2,027,984			
	389	£1,810,409			
	394	£2,102,160			
	297	£1,615,277			
	194	£1,159,388			
	208	£980,575			
	403	£2,173,353			
	203	£968,541			
	206	£997,748			
	205	£1,216,724			
	198	£916,148			
	298	£1,378,927			
	209	£966,792			
	260	£1,472,181			
	212	£1,031,410			
	209	£1,012,632			
	175	£942,288			
	418	£1,932,710			
	568	£3,394,846			
	201	£939,690			
	366	£2,109,445			
	628	£2,907,982			
	381	£1,761,504			

<b>PRIMARY SUB TOTAL</b>	<b>68,000</b>	<b>355,834,788</b>
--------------------------	---------------	--------------------

	£1,673,223	£1,673,223			
	£1,531,234	£1,531,234			
	£965,054	£965,054			
	£1,113,586	£1,113,586			
	£917,825	£917,825			
	£626,722	£626,722			
	£971,741	£971,741			
	£1,085,115	£1,088,241			
	£2,454,776	£2,454,776			
	£2,513,008	£2,513,008			
	£2,564,159	£2,564,159			
	£2,557,554	£2,557,554			
	£1,528,298	£1,528,298			
	£2,185,532	£2,185,532			
	£1,073,615	£1,073,615			
	£2,172,407	£2,172,407			
	£1,656,617	£1,656,617			
	£1,914,372	£1,914,372			
	£1,102,941	£1,105,692			
	£2,221,821	£2,211,470			
	£1,008,273	£1,008,273			
	£1,288,932	£1,288,932			
	£904,851	£904,851			
	£2,066,916	£2,066,916			
	£1,946,438	£1,948,287			
	£731,120	£731,120			
	£982,626	£982,626			
	£2,038,368	£2,038,368			
	£1,807,355	£1,807,355			
	£2,169,957	£2,169,957			
	£2,225,979	£2,225,979			
	£456,818	£462,270			
	£2,409,465	£2,409,465			
	£1,734,640	£1,734,640			
	£2,923,517	£2,923,517			
	£1,192,761	£1,192,761			
	£1,135,591	£1,135,591			
	£2,027,984	£2,027,984			
	£1,810,409	£1,810,409			
	£2,102,160	£2,102,160			
	£1,615,277	£1,615,277			
	£1,159,388	£1,159,388			
	£980,575	£980,575			
	£2,173,353	£2,173,353			
	£968,541	£968,541			
	£997,748	£997,748			
	£1,216,724	£1,216,724			
	£916,148	£916,148			
	£1,378,92				

John Smeaton Academy		627	£5,136,081	£166,245	<b>£5,302,326</b>	627	£5,455,809	627	£5,373,775	£5,388,836	£5,295,641	£5,296,786	£7,206	£7,208	-£6,685	-£5,540
Leeds City Academy		951	£8,767,702	£249,744	<b>£9,017,447</b>	951	£9,068,419	951	£9,065,296	£9,020,936	£9,065,296	£9,020,936	£9,517	£9,471	£47,850	£3,490
Leeds East Academy		1,036	£7,587,999	£280,277	<b>£7,868,277</b>	1,036	£7,943,531	1,036	£7,989,845	£7,989,845	£7,957,414	£7,959,403	£7,651	£7,653	£89,138	£91,126
Leeds Jewish Free School		137	£1,034,038	£32,715	<b>£1,066,754</b>	137	£1,012,894	137	£1,071,377	£1,066,754	£1,071,377	£1,066,754	£7,764	£7,730	£4,623	£0
Leeds West Academy		1,413	£9,534,842	£345,630	<b>£9,880,472</b>	1,413	£9,966,072	1,413	£10,034,237	£10,034,237	£9,995,037	£9,997,541	£7,038	£7,040	£114,565	£117,069
Otley Prince Henry's Grammar School Specialist Language College		1,307	£7,503,625	£261,288	<b>£7,764,913</b>	1,307	£7,835,465	1,307	£7,871,817	£7,871,817	£7,871,817	£7,871,817	£5,995	£5,995	£106,904	£106,904
Rodillian Academy		1,514	£9,498,543	£319,230	<b>£9,817,773</b>	1,514	£9,945,515	1,514	£10,014,198	£10,014,198	£9,928,333	£9,930,682	£6,168	£6,170	£110,560	£112,909
St. Mary's Menston, a Catholic Voluntary Academy		1,007	£5,782,909	£192,745	<b>£5,975,654</b>	1,007	£6,036,965	1,007	£6,066,149	£6,066,149	£6,066,149	£6,066,149	£5,995	£5,995	£90,495	£90,495
Temple Learning Academy		936	£5,935,233	£224,133	<b>£6,159,366</b>	936	£6,613,715	936	£6,332,511	£6,352,930	£6,226,576	£6,228,128	£6,638	£6,640	£67,210	£68,761
Temple Moor High School		1,148	£7,163,343	£247,352	<b>£7,410,696</b>	1,148	£7,474,290	1,148	£7,525,357	£7,525,357	£7,496,708	£7,498,576	£6,494	£6,495	£86,012	£87,880
The Farnley Academy		1,487	£9,570,256	£338,733	<b>£9,908,989</b>	1,487	£10,024,556	1,487	£10,061,236	£10,061,236	£10,022,591	£10,025,103	£6,710	£6,712	£113,602	£116,114
The Morley Academy		1,434	£8,636,813	£301,875	<b>£8,938,688</b>	1,434	£9,034,058	1,434	£9,069,032	£9,069,032	£9,035,023	£9,037,285	£6,276	£6,278	£96,335	£98,597
The Ruth Gorse Academy		1,285	£9,249,850	£333,114	<b>£9,582,964</b>	1,285	£9,671,167	1,285	£9,730,573	£9,730,573	£9,691,904	£9,694,330	£7,502	£7,504	£108,939	£111,365
Trinity Academy Leeds	Yes	625	£4,395,880	£167,516	<b>£4,563,397</b>	625	£5,366,084	625	£4,668,623	£4,668,623	£4,668,623	£4,668,623	£7,407	£7,407	£105,226	£105,226
University Technical College Leeds		267	£1,917,464	£67,715	<b>£1,985,179</b>	275	£2,047,336	267	£2,019,293	£2,019,293	£2,010,504	£2,010,976	£7,425	£7,426	£25,325	£25,797
Woodkirk Academy		1,541	£9,292,283	£327,923	<b>£9,620,206</b>	1,541	£9,717,441	1,541	£9,761,304	£9,761,304	£9,724,475	£9,726,912	£6,284	£6,285	£104,269	£106,705
<b>SECONDARY SUB TOTAL</b>		49,183	324,955,681	11,115,081	336,070,762	49,401	342,794,841	49,183	341,897,731	341,842,164	339,927,591	339,900,669			3,856,829	3,829,907
<b>GRAND TOTALS</b>		<b>117,183</b>	<b>664,153,727</b>	<b>22,117,221</b>	<b>686,270,949</b>	<b>117,426</b>	<b>699,867,464</b>	<b>117,183</b>	<b>697,732,519</b>	<b>697,732,519</b>	<b>694,243,857</b>	<b>694,243,857</b>			<b>7,972,908</b>	<b>7,972,908</b>
Growth Fund (Explicit) (see note 7 below)					£980,000		£0		£0	£0	£0	£0				
Transfer to High Needs Block					£3,338,612		£0		£0	£0	£3,488,663	£3,488,663				
<b>SCHOOLS BLOCK TOTAL</b>					<b>£690,589,560</b>		<b>£699,867,464</b>		<b>£697,732,519</b>	<b>£697,732,519</b>	<b>£697,732,519</b>	<b>£697,732,519</b>				

NOTES

- Numbers funded through the funding formula in reception to yr 11 (including pupils in resourced units as at October 2022 census).
- Formula funding allocations before adjustments for de-delegation and education services.
- The cap on gains cannot apply to any school classified as new & growing i.e. a school that opened in the past 7 years and has not reached its full number of year groups
- The cap on gains cannot reduce the post minimum funding guarantee (MFG) budget below the minimum funding level (MFL) per pupil.
- There is an increase in pupil-led funding for all schools. However as we have accounted for any changes to business rates in the total funding allocation for 2023/24 and some schools received one-off business rates funding adjustments in 2023/24, this may affect the overall comparison between 2023/24 and 2024/25.
- The school level figures published by the DfE will differ from the council's calculations as: a) the DfE has calculated school-level figures on a different basis to the provisional funding for the local authority and b) local factors such as changes in business rates affect the distribution of funding across schools.
- A Growth Fund will be established for 2024/25, however this is not currently shown in the 2024/25 figures as the ESFA has not yet advised how much growth funding local authorities will receive.
- The formula funding currently includes an allocation for business rates however these may be paid directly by the ESFA and taken from the funding formula for the school - we have yet to confirm the process that will be used in 2024/25.

## **Appendix B - Additional Information – High Needs Block Transfer 2024/25**

This document is intended to provide further background information for context in regard to the request to transfer funding from the Schools Block into the High Needs Block in 2024/25.

The key issues to note are:

- **Funding:** The latest advice to local authorities indicates a 3% year on year increase in high needs funding for 2024/25 onwards. This would result in an in-year funding shortfall of between £0.7m and £50.6m between 2024/25 and 2026/27.
- **Cap on funding:** Leeds will continue to see a gains limit factor (cap) applied against the high needs funding which equates to £2.92m for 2024/25. Since 2018/19 Leeds has lost £24.56m of high needs funding due to the cap.
- **Demand and Complexity:** In line with the national picture, Leeds continues to experience an increase in high needs demand and complexity with this trend expected to continue. The projected increases in level of need, and associated costs, significantly exceed the 3% increase in funding forecast beyond 2024/25.

### **National SEND review and Change Programme**

In September 2023 the DfE commenced a Change Programme, working with partner local authorities to trial the reforms as proposed in the national [SEND and Alternative Provision Improvement Plan](#). Leeds is part of the Yorkshire and Humber Change Programme Partnership and will therefore be working together with the DfE and local authorities in Wakefield, Bradford and Calderdale, to pilot ideas and shape future recommendations.

Part of the proposed reforms includes the establishing of National Standards, a series of benchmarks and expectations of what can be expected to be provided for children and young people with various levels of SEND. The proposals suggest that national funding bands and tariffs, consistent across every authority, will sit alongside the National Standards agenda. Consequently the outcomes of the Change Programme, and the resultant proposals and recommendations, will have important implications for how support for pupils with SEND is delivered, and how this will be funded, when and by whom. We do not yet know what impact these proposals will have on the projections for the high needs block.

### **Funding increases**

Local authority allocations are currently released on an annual basis and it is not yet known what increases may be available beyond 2024/25.

In 2022/23 and 2023/24 supplementary funding for schools and the high needs block was announced in December. Those allocations have been included in the base funding for 2024/25. There is no indication that there will be further supplementary allocations for 2024/25.

The High Needs Block (HNB) indicative allocation for 2024/2025 is £133,934k. This is an increase of £6,474k compared to 2023/24 after taking into account the supplementary high needs funding received in 2023/24.

In relation to high needs, since 2018/19 the Government has implemented a national funding formula to address historical funding differences. In recent years Leeds received a funding increase of at least 8%, however this will reduce to 5% in 2024/25 and beyond this the DfE has advised local authorities should assume a 3% increase.

The figures presented in the table below assume a 3% increase in high needs funding each year, in line with the advice received. There is however a risk that the national increase could be lower. It is also possible that the high needs funding increase could be higher than estimated. To provide some context for the potential impact of funding increases, for every 1% increase in the high needs allocation there would be approximately £1m of additional funding received.

Medium Term High Needs Projections	2023/24	2024/25	2025/26	2026/27
	£m	£m	£m	£m
DSG Income	-117.2	-120.3	-123.4	-127.0
Funding passported to institutions	109.8	124.7	144.1	167.1
Commissioned Services	2.7	2.8	2.9	3.0
Directly managed by Children & Families	6.0	7.0	7.2	7.5
<b>Projected funding shortfall</b>	<b>1.3</b>	<b>14.2</b>	<b>30.8</b>	<b>50.6</b>

### Gains limit factor (cap on gains)

Although funding has increased since the national funding formula was introduced, some DSG funding increases have been subject to a funding floor and gains limit factor to ensure a minimum level of increase for every local authority and to reduce the impact of year-on-year changes to funding levels. Although this cap has been removed from the schools block from 2020/21 onwards, it is still in place for the high needs block.

Although Leeds has been receiving the maximum increases allowed under the gains limit factor (cap), it is less than the national funding formula entitlement. If this had not been in place, Leeds would have been allocated an additional £34.06m of funding between 2018/19 and 2023/24 across the schools block (£9.5m) and high

needs block (£24.56m). A further funding cap of £2.92m will apply in 2024/25 to the high needs block, based on provisional funding allocations released by the ESFA. Leeds is one of the 32 local authorities out of 150 that will continue to have their funding capped in 2024/25.

There is no timescale for the removal of the gains limit factor and the ESFA have indicated that this will be a permanent feature of the high needs national funding formula.

### **High needs demand and complexity**

In line with the national picture, Leeds has experienced an increase in high needs demand and complexity in recent years, with this trend expected to continue. However as noted above there is currently still a cap on funding increases and to date any additional funding received by Leeds has been exceeded by increased costs.

The Leeds SEN2 return to the DfE reported a 60%+ increase in the number of requests for EHC Assessments in the calendar year 2022. This is due to both the longer-term trend of growing need in the community, as well as a significant number of referrals which were thought to have been delayed until schools returned after the pandemic and identified unmet need. The number of EHC Plans in total continues to increase, by over 15% in the last two years. This is a consistent long-term trend since 2013, mirrored by national comparators.

National statistics indicate that around 50% of learners with an EHCP then move into specialist provision. At the present time we are working to develop more specialist resourced bases in mainstream schools for specific areas of identified need. This is alongside the creation of a new generic special school, continued conversations about expansions of our existing special schools, and an ongoing bid with the DfE to develop a 200 place SEMH special free school. In line with the increased number of specialist placements, top ups to special schools (maintained, academies and free schools) are projected to increase from £24.1m in 2022/23 to £31.2m in 2024.25.

It must also be noted that even though we have a planned programme of developing additional provision across the city there will still remain the need to commission out of authority places for those learners with highly complex and individual needs that require a bespoke package. Focused work has been undertaken to reduce dependence on expensive out of authority independent school places, so that such resources can be reinvested locally.

The largest increase in expenditure in these projections is in funding to mainstream schools. Top up funding increased by 24.33% between 2021/22 and 2022/23 and a further 33.45% between 2022/23 and 2023/24. On top of this, additional block funding increased by 80.76% and 91.44% over the same period. Assuming this trend continues, the funding paid to mainstream schools is projected to increase from £23.1m in 2022/23 to £43.0m in 2024/25.



## **Funding paid to high needs settings**

The FFI unit rate for 2023/24 has increased from £672 to £696 for mainstream, early years and post 16 settings. At this stage the unit rate is not expected to increase further in 2023/24 for these settings.

For special schools, the proposal was to increase the FFI unit rate from £708 to £732. In addition, the high needs operational guide for 2023/24 has set a minimum funding guarantee (MFG) for special schools of 3% per pupil compared to 2021/22 baseline funding and a requirement to pay settings additional funding equivalent to 3.4% per pupil compared to 2022/23 funding levels. For 2024/25 each local authority is required to set a minimum funding guarantee of between 0% and 0.5%.

The vast majority of the high needs block is passported to institutions. A review in 2017/18 showed that £49.3m or 86.87% of the block was passported. However, the current projections for 2023/24 shows £109.8m or 92.72% is expected to be passported.

One of the largest increases in recent years relates to funding paid to mainstream settings. The current projections for 2023/24 show a 33.45% increase in top ups and a 91.44% increase in additional £6k blocks paid to mainstream settings compared to actual costs in 2022/23. In total, funding paid to mainstream settings is projected to be £9.5m higher in 2023/24 than in 2022/23.

If a transfer to the high needs block is not agreed, we will need to look at other options to ensure the high needs block remains in balance, which may include reviewing eligibility criteria and notional block calculations. This would likely result in a reduction in the amount of funding available to schools and academies.

## **Funding transfers between DSG blocks**

Since 2017/18 a total of £19.18m has been transferred to the high needs block from other funding blocks of the DSG, in order to redirect funding to settings to support special educational needs pressures (£17.54m from the schools block and £1.65m from the central school services block). For 2023/24, a transfer of £3.38m was agreed. The high needs block is currently projected to be overspent by £1.3m, if the transfer had not been agreed, the block would be projecting an even greater overspend of £4.68m.

Beyond 2024/25 it is not known whether funding can continue to be moved between DSG blocks in this way, as the DfE has indicated the ability for local authorities to do this in future will become more limited.

If funding transfers are still allowed in future, any transfers from the schools block to the high needs block would require annual consultation with schools and approval by the Leeds Schools Forum.



## **2024/25 Schools split sites funding (mainstream schools and academies only)**

Following the ESFA consultation on implementing the direct national funding formula the Department for Education (DfE) is introducing a new funding factor for split site schools from 2024/2025 as part of the transition to a 'direct' national funding formula (NFF).

This means that local authorities will no longer be responsible for determining the approach to funding split site schools in their area from 2024/2025 when the current local split site funding formula will be replaced by the DfE's split site funding factor within the National Funding Formula.

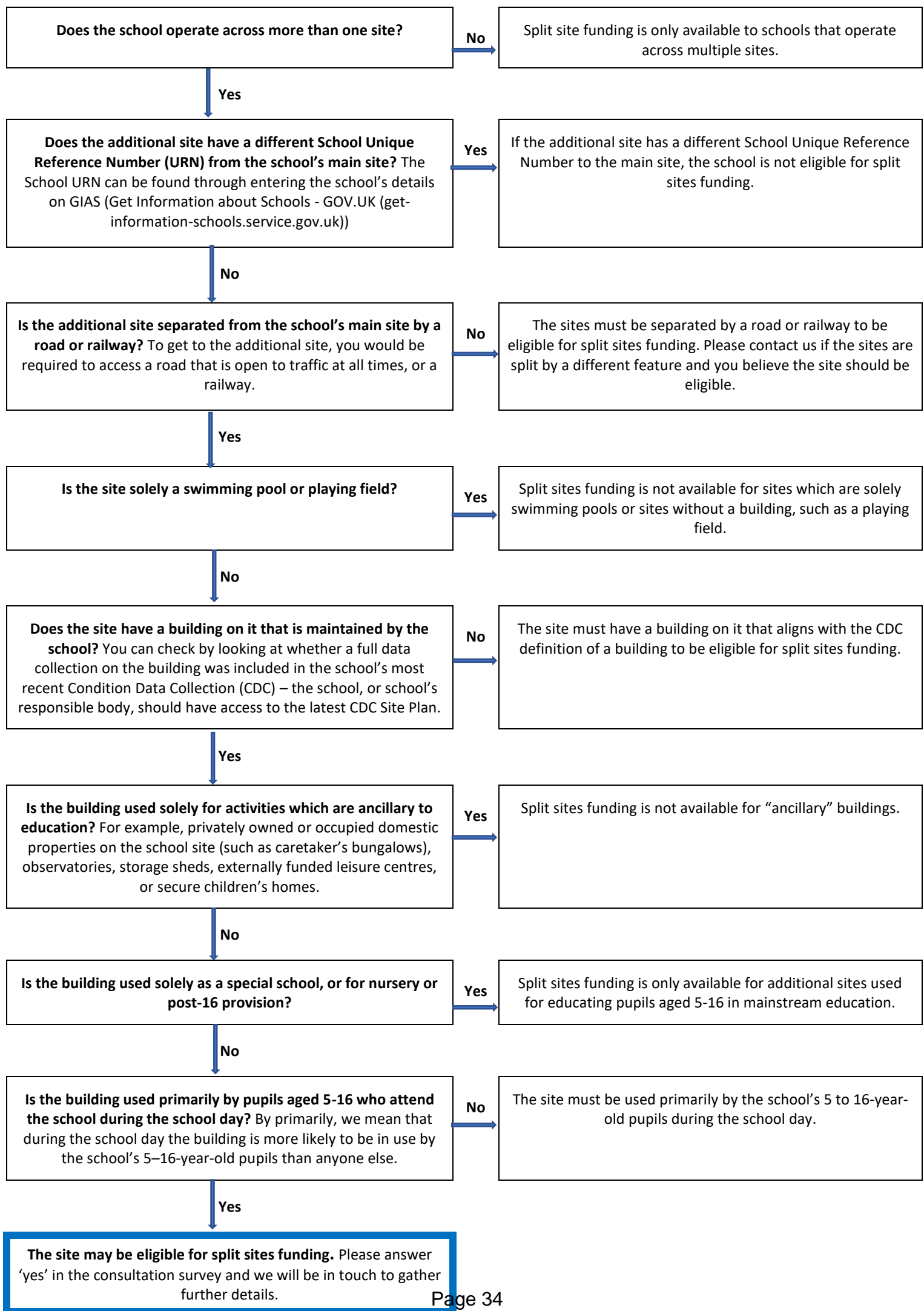
Therefore, we require all mainstream schools and academies to check whether they will qualify for split site funding under the DfE national eligibility criteria.

### **Split sites eligibility criteria:**

For the NFF, split site schools must have at least one additional site which:

- does not have a different school Unique Reference Number (URN) to the school's main site;
- is separated from the school's main site by a road or a railway;
- has a building on it which is maintained by the school. The DfE are following the definition of a building used by the DfE Condition Data Collection programme (CDC): a block located on a school site which is owned, controlled and/or maintained by the school and which is primarily used for educational purposes. This excludes any 'ancillary' buildings, swimming pools or playing fields;
- is used primarily for the educational purposes of 5 to 16-year-olds in mainstream education. Therefore, this excludes any sites used solely for special schools (for example, within the same multi-academy trust), nurseries, or school sixth forms.

Please consider these factors and consult the flowchart below to assess whether you think your school will be eligible for the new split sites funding. If you believe your school meets all the criteria, indicate this by answering 'yes' to the split sites question on the consultation survey. We will then be in touch to gather further details.





This page is intentionally left blank

## School funding arrangements 2024/25

### CONSULTATION

#### 1. Summary of key points

1.1. This consultation is on school funding arrangements for 2024/25.

The consultation covers:

- a) Transfer of up to 0.5% of funding from the schools block to the high needs block of the Dedicated Schools Grant (DSG), in order to provide funding to schools in relation to high needs pupils.
- b) The formula for allocating schools block funding to mainstream schools. The Education and Skills Funding Agency (ESFA) requires that the effect of the proposal above is modelled for schools to consider. Two options are provided for comment; one of these options would provide the 0.5% minimum funding increase per pupil included in the National Funding Formula.

For maintained mainstream schools only the following is included in the consultation:

- c) A contribution towards the severance costs of maintained school staff.

1.2. The consultation is open until the end of Wednesday 8th November 2023. Unfortunately, we are unable to offer a longer period for comment due to the need to meet ESFA deadlines and the recent delays caused by the DfE funding allocations error [DfE Permanent Secretary NFF letter to the Education Select Committee - GOV.UK \(www.gov.uk\)](#).

1.3. Detailed school level figures for the formula options are attached at Appendix A. These use the council's indicative funding allocation provided by the Education and Skills Funding Agency which is based on October 2022 data. Please note that these figures may differ from the provisional school level allocations published by the ESFA (see 2.6 for further details). The final funding for 2024/25 will be updated for October 2023 pupil data and confirmed by the ESFA in December 2023.

1.4. Further information will be provided during the Headteacher Briefing that is being held on Tuesday 17<sup>th</sup> October 2023. We will talk through the proposals being made and there will be an opportunity to ask questions.

- 1.5. If you have any queries during the consultation period, please email [training.schools@leeds.gov.uk](mailto:training.schools@leeds.gov.uk), or contact us by telephone on 0113 3788245.
- 1.6. Responses to the consultation should be made online via this link: <https://surveys.leeds.gov.uk/s/7ST3DE/>
- 1.7. We are also using the consultation to identify any schools that may qualify for the updated split site funding in the 2024/25 funding formula. Please see Appendix C for more details and what to do if you think your school could qualify.
- 1.8. We will report to Schools Forum on 16<sup>th</sup> November 2023 on the outcome of the consultation.

## **2. Background**

- 2.1. The Dedicated Schools Grant (DSG) is allocated in four blocks: schools, high needs, early years, and central schools services. The Education and Skills Funding Agency (ESFA) continues to use the national funding formula (NFF) to calculate the blocks within the DSG that are allocated to local authorities. Local authorities currently have some flexibility in how this funding is allocated to schools and to transfer funding between blocks, within the constraints set out by the ESFA.
- 2.2. Local authorities are required to move their local formula factors 10% closer to the NFF values, compared to where they were in 2023/24, unless their local formulae are already so close to the NFF that they are classed as mirroring the NFF. Leeds is mirroring the NFF due to the strategy adopted from 2018/19 onwards to move as close as possible to the NFF.
- 2.3. In December 2022, additional schools block funding (known as the Mainstream Schools Additional Grant (MSAG)) was announced for 2023/24 which totalled £22m. This has been added to the base allocation for 2024/25 to give a total of £697.73m (excluding the growth allocation).
- 2.4. The indicative schools block allocation for Leeds in 2024/25 is £697.73m (excluding growth funding, which is not confirmed until December). This represents a total increase of £12.97m, compared to the equivalent allocation received for 2023/24.
- 2.5. In addition to this the DfE have announced the new Teachers' Pay Additional Grant (TPAG) which totals £525m nationally for period Sept 23 - March 24 (£6.6m for Leeds) and a further £900m nationally for financial year 2024/25 (Leeds allocation yet to be confirmed).
- 2.6. The indicative high needs block allocation for Leeds in 2024/25 is £133.93m and has increased by £6.47m. This block provides funding in relation to special educational needs and although funding has increased compared to 2023/24, it is still £2.92m less than would be due under the NFF as funding increases are subject to a gains limit factor (previously referred to as the funding cap). If the gains limit factor had not been in place, Leeds would

also have been allocated an additional £24.56m of high needs block funding between 2018/19 and 2023/24.

- 2.7. This consultation has been prepared using the ESFA's indicative allocation for Leeds, which uses the **October 2022** census. Please be aware that the school level figures that have been circulated recently by the ESFA are not necessarily what schools will receive in 2024/25, as they have been prepared by the ESFA on a different basis to the local authority level allocations and local authorities still have the ability to set a different formula in response to local need.
- 2.8. The actual schools block allocation for 2024/25 will not be provided to local authorities by the ESFA until December 2023. This will reflect any changes in pupil data from the October 2023 census for mainstream schools and academies.
- 2.9. We will report to Schools Forum on 16<sup>th</sup> November 2023 with the outcome of this consultation and draft proposals for funding arrangements in 2024/25. The final proposals for the funding arrangements will be taken to Schools Forum in January 2024, following the receipt of updated funding information from the ESFA in December 2023. Mainstream maintained schools will be advised of their final funding allocation by the council by the end of February 2024. Mainstream academies will be notified of their funding allocations directly by the ESFA.

### **3. Consultation**

#### **3.1. Transfers to the high needs block**

- 3.1.1. We are consulting on a 0.5% transfer from the schools block to the high needs block.

##### Background

- 3.1.2. The schools block is mainly ring-fenced, but local authorities are able to transfer up to 0.5% of it with the agreement of their Schools Forum, and after consultation with schools. There is also the ability to submit a request to the ESFA to transfer more than 0.5%. The final value of the 0.5% is dependent on the final grant allocation which will not be received until December 2023. For Leeds, it is estimated that 0.5% equates to approximately £3.49m.
- 3.1.3. The ESFA expects that most proposals by local authorities to move funding from their schools block will arise as a result of pressures on their high needs budgets. The high needs block in Leeds, in common with many around the country, is under considerable pressure due to increasing demographic growth and complexity of children's needs.
- 3.1.4. The most recent projection for the high needs block is an overspend of £1.3m in 2023/24.
- 3.1.5. The medium-term forecasting indicates continued pressure on the high needs block going forward, reflecting increasing demand. Spending on the high needs block is currently forecast to be £14.4m more than the funding available for 2024/25, increasing to a £50.9m

deficit in 2026/27. More detail and context regarding the current and future demands on the high needs block, and therefore the need for the transfer, is contained in Appendix B.

- 3.1.6. Although funding on the high needs block has provisionally increased by £6.47m for Leeds in 2024/25, this is still subject to a gains limit factor which equates to £2.9m. If the cap on gains had not been in place, Leeds would also have been allocated an additional £24.56m of high needs block funding between 2018/19 and 2023/24.

#### Proposal

- 3.1.7. As set out above we are proposing a transfer to the high needs block of 0.5% from the schools block. The ESFA allows us to transfer up to 0.5% (estimated to be approximately £3.49m) from the schools block with the agreement of Schools Forum.
- 3.1.8. As the increase in the provisional 2024/25 schools block allocation for Leeds is expected to be approximately £12.97m compared to 2023/24 (before any pupil growth which will be confirmed in December), the transfer of £3.49m out of the schools block in 2024/25 will still leave an increase £9.48m in the schools formula. In addition, funding transferred to the high needs block is effectively redistributed to schools through the funding mechanisms associated with that block. For example, the Funding for Inclusion (FFI) payments made to all schools are funded from the high needs block.
- 3.1.9. The impact on individual schools in the funding formula of the proposed £3.49m transfer will vary, depending on the formula adopted. Further details of the formula options under consultation are provided in section 3.2 below, and the impact on each school is shown in Appendix A.
- 3.1.10. Following the consultation, we will take our proposal to Schools Forum on 16<sup>th</sup> November 2023 on any transfer from the schools block to the high needs block. Schools Forum will decide on whether to accept the council's proposal on the transfer from the schools block. In the event that Schools Forum does not agree, the DfE will adjudicate.
- 3.1.11. In future years a further request could also be made to transfer funds from the schools block to the high needs block. This would depend on the projections for the high needs block budget at the time. If a further transfer was required, it would form part of a separate consultation during the next financial year.

### **3.2. Mainstream Schools funding formula**

#### Background

- 3.2.1. The local authority is responsible for proposing the schools funding formula and for consulting on this with Schools Forum. The local authority retains the final decision on the formula to be used which will apply to all mainstream maintained schools and academies.
- 3.2.2. The council is proposing to continue to move as close as possible to the national funding formula for 2024/25 as has been the approach taken since 2018/19, which was then



supported by the majority of schools that responded to the consultation and also Schools Forum.

- 3.3. The national funding formula for schools comprises various factors that provide basic per-pupil funding, additional needs funding (such as deprivation funding) and school-led funding (such as a lump sum payment). A summary is provided below.

**Figure 1: Factors in the schools national funding formula**

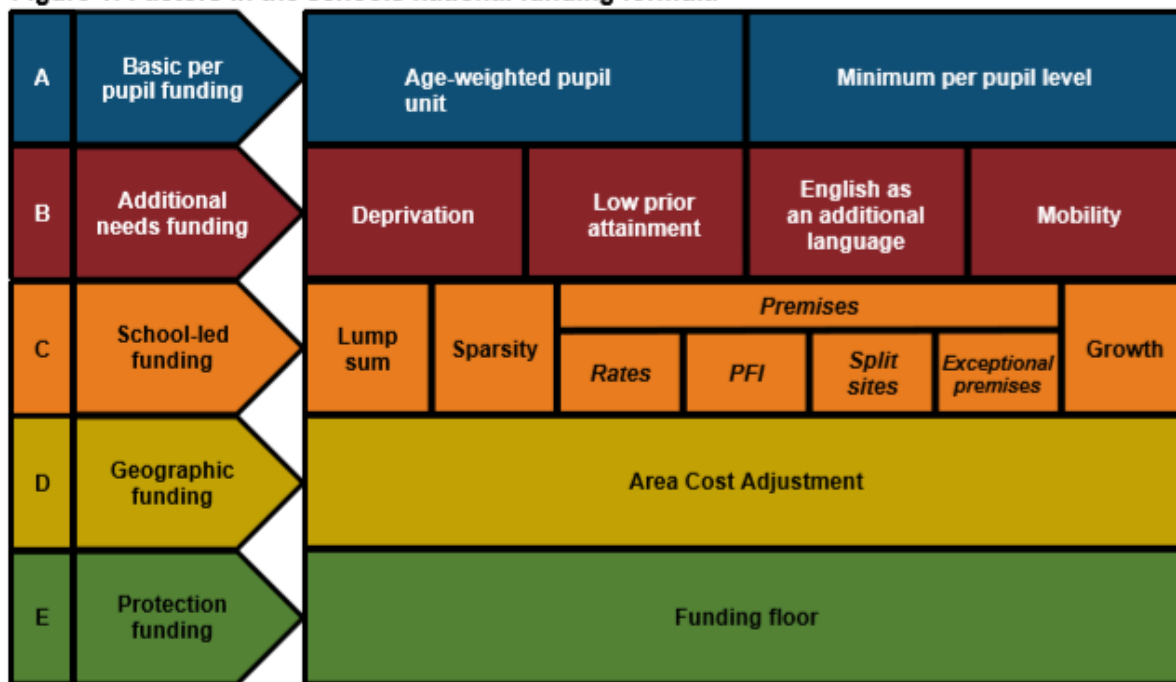


Figure 1: This illustrates the factors that will be taken into account when calculating schools block DSG funding allocations through the national funding formula. It is not to scale. Funding for factors in italics will be allocated to local authorities on the basis of historic spend.

- 3.4. A number of changes have been announced which provide increases in funding for local authorities in 2024/25. It should be noted that these form the basis on which the council is allocated the schools block funding for all Leeds mainstream schools and academies, however the council has the ability to set a different funding formula in response to local need.
- 3.4.1. If funding is transferred from the schools block to the high needs block, it will not be possible to fully move to the national funding formula as not enough funding will remain. However, there would still be £15.3m additional funding available for schools in 2024/25 compared to 2023/24, due to increases in the council’s provisional schools block allocation.
- 3.4.2. Formula factor increases
- a) The basic per pupil funding factor, FSM6 and the lump sum factors have been increased to reflect the rolling in of the mainstream schools additional grant (MSAG) into the NFF baseline.

- b) In addition, the core factors in the NFF – the basic per pupil funding factor, low prior attainment (LPA), FSM6, income deprivation affecting children index (IDACI), English as an additional language (EAL), mobility, sparsity, and the school - will increase by 1.4%.
- c) The free school meals factor (FSM) will increase by 1.6%, in line with the GDP deflator forecast for 2024-25.
- d) The minimum per pupil levels (MPPL) will increase by 1.4%
- e) The NFF funding floor will be at 0.5%.
- f) There will be 0% on all premises-based factor funding, except for Private Finance Initiative (PFI) which has increased by Retail Prices Index excluding mortgage interest payments rate (RPIX) as at April 23 (10.4%) for the PFI factor only.
- g) For the first time in 24/25 funding will be allocated on both growth and falling rolls. Local authorities will continue to have discretion over whether to operate a falling rolls fund and work is currently underway to evaluate this option.
- h) Schools funding formula: The council can decide to allocate these increases out differently to schools if needed, subject to any ESFA restrictions or requirements for minimum funding increases.

#### 3.4.3. Minimum funding guarantee

- a) Funding allocated to the council: A minimum increase of 0.5% will be guaranteed per pupil compared to allocations under the 2023/24 NFF.
- b) Schools funding formula: As there is still some local discretion in the formula, local authorities will be able to set a minimum funding guarantee for schools between 0% and +0.5%. In 2023/24 Leeds set a minimum funding guarantee of +0.5%.

#### 3.4.4. Cap on gains

- a) Funding allocated to the council: The schools NFF will not include a gains cap under the 2023/24 formula.
- b) Funding allocated to schools: There is still local discretion to set a cap in the formula if needed. The cap on gains for Leeds schools was set by the council at 5.39% in 2023/24 to account for funding transferred from the Schools Block to the High Needs Block. To allow for the transfer to the High Needs Block a cap on gains would be necessary again in 2024/25. Any capping must not take schools below the minimum funding levels.

#### 3.4.5. Minimum Funding Level increases

- a) Funding allocated to the council: Increases have been announced in the minimum funding levels for 2024/25 to £5,995 per pupil for secondary schools and £4,610 per pupil for primary schools. Schools that benefit from the minimum funding level are those that receive less targeted funding through the other formula factors. This generally means that schools that have lower funding provided through the additional need factors are more likely to be below the minimum funding level and therefore receive an uplift to this amount.
- b) Funding allocated to schools: The government expects that the minimum funding levels will be provided to schools in 2024/25 and this a mandatory requirement.

Funding formula options

- 3.4.6. Although local authorities have some discretion to adjust the funding formula there are also many restrictions on what can be adjusted which limits the council’s options for adjusting the formula.
- 3.4.7. We have provided details of two different funding formula options for consideration. As these proposals are based on the indicative funding allocations which use October 2022 pupil data, the affordability of these options may change once the October 2023 census details are available in December. These proposals are also only for 2024/25 only and we will consult again next year on the 2025/26 funding formula if this does not move to the NFF.
- 3.4.8. Using the principles established in previous years for the formula, we have modelled two options for 2024/25 which vary the minimum funding guarantee and cap on gains.
- 3.4.9. **Option 1:** A cap on gains of 1.06%. All other factors are in line with the national funding formula (see table below), including the minimum funding guarantee of 0.5%.
- 3.4.10. **Option 2:** A reduced minimum funding guarantee of 0% and a cap on gains of 1.09%. All other factors are in line with the national funding formula (see table below).

	2023/24 (for comparison)		2024/25		
Funding formula factor	National Funding Formula	Leeds Funding Formula	National Funding Formula	Leeds Option 1	Leeds Option 2
Minimum funding guarantee <sup>1</sup>	0.5% per pupil	0.5% per pupil	0.5% per pupil	0.5% per pupil	0% per pupil
Cap on gains <sup>1, 2</sup>	No cap	5.39% per pupil	No cap	1.06%	1.09%

	2023/24 (for comparison)		2024/25		
Minimum per pupil funding level <sup>1, 2</sup>	Secondary £5,715	Secondary £5,715	Secondary £5,995	Secondary £5,995	Secondary £5,995
	Primary £4,405	Primary £4,405	Primary £4,610	Primary £4,610	Primary £4,610

<sup>1</sup> Excluding premises-based funding

<sup>2</sup> The minimum per pupil funding level cannot be subject to the cap on gains

3.4.11. We have provided an appendix listing the details for schools by phase and in alphabetical order. When comparing the figures on the appendix please note that:

- a) The ESFA's final funding allocations in December 2023 may result in changes to the final school formula. Specifically, we have not yet been advised how much funding to expect for growth in the formula. If the amount allocated for growth is insufficient this will affect the affordability of the options proposed in this consultation.
- b) Changes in premises-led funding may affect the comparison between 2023/24 and 2024/25 total funding. Specifically:
  - We have reflected any changes in business rates costs in the 2024/25 funding figures.
  - For PFI schools, the required amount of PFI affordability gap funding will be distributed through the formula in 2024/25. PFI schools should not expect to receive any additional PFI funding outside of the formula in 2024/25.
- c) All figures are based on financial years and the 2023/24 funding figures are those submitted by the council to the ESFA. However, for free schools and academies, the ESFA provides funding based on academic years. The 2023/24 formula allocation may therefore not agree to academy and free school General Annual Grant statements. However, the increases between the 2023/24 and 2024/25 figures are a correct reflection of the indicative gains resulting from the funding formula options.
- d) The figures are before contributions for de-delegation or severance cost contributions (which would only apply to maintained schools).

### 3.5. Contribution towards severance costs - maintained mainstream schools only

3.5.1. We are also consulting on a proposal for maintained schools to make contribution of £2.50 per maintained school pupil, based on forecast pupil numbers towards the severance costs of maintained school staff, which are charged to the council. This would equate to an estimated total of £150k.

- 3.5.2. This is in line with 2023/24 when Schools Forum agreed that maintained schools would contribute £2.50 per maintained school pupil based on forecast numbers at the time.
- 3.5.3. The £2.50 per pupil contribution is being proposed for 2024/25 as the council continues to face a significant budget pressure from the reduction in the Education Services Grant (ESG) over a number of years. ESG has been used to fund a wide range of services for schools such as school improvement, asset management, education welfare services and other statutory and regulatory services as well as the severance costs of maintained school staff. As the grant has been reduced the council has sought to protect these services.
- 3.5.4. Current legislation states that premature retirement costs are chargeable to the school's delegated budget while redundancy costs are charged to the local authority's budget.
- 3.5.5. For 2024/25 we are proposing that maintained schools contribute towards severance costs as they are driven by school decisions, although we appreciate that this may be as a result of financial pressures. However, this approach is equitable with the treatment of academies, who no longer receive funding for severance costs and are responsible for meeting this cost themselves.
- 3.5.6. Following the consultation, we will take a proposal to Schools Forum on 16<sup>th</sup> November 2023 in relation to a contribution from maintained schools for severance costs for maintained school staff. Maintained school members of Schools Forum will decide on whether to accept this proposal. In the event that the local authority proposes a contribution, but Schools Forum does not agree, the DfE is able to adjudicate if the local authority still wishes to seek a contribution.

#### **4. Consultation responses**

- 4.1 Responses to the consultation should be made via the online survey <https://surveys.leeds.gov.uk/s/7ST3DE/> by the end of Wednesday 8th November 2023. We will report to Schools Forum on 16<sup>th</sup> November 2023 with the outcome of the consultation.
- 4.2 The final proposals for the funding formula will be taken to Schools Forum in January 2024, following receipt of updated funding information from the ESFA in December 2023. Mainstream maintained schools can expect to be advised of their final funding allocation by the council end of February 2024. Mainstream academies will be notified of their funding allocations directly by the ESFA.

This page is intentionally left blank

Schools Forum forward plan 2023/24

Schools Forum date	Driver for date	Agenda items	Purpose	Responsible officer	Comments
Thursday 22/06/2023	No external requirements	School balances 2022/23 outturn	Information	Lucie McAulay/Liz Jackson	
		DSG 2022/23 outturn	Information	Lucie McAulay/Shirley Maidens	
Thursday 05/10/2023	Get views from SF before consultation	DSG budget monitoring 2023/24	Information	Lucie McAulay/Shirley Maidens	
		School funding update 2024/25, including consultation plans	Information	Lucie McAulay	
		DSG Medium Term Financial Strategy 2024/25 - 2028/29	Information	Lucie McAulay	
Thursday 16/11/2023	Assume consultation the week before and after half term then need time to clear reports before SF. Disapplication deadline usually 20th November, SF	School funding formula arrangements 2024/25, including any transfers of funding between the DSG blocks	Decision and consultation	Liz Jackson	
Tuesday 16/01/2024	APT deadline usually 21st Jan, SF needs to be before this. Final funding figures received from ESFA at end of Dec. Need as much time as possible at start of Jan to do modelling before SF meeting.	Final school funding arrangements 2024/25	Information	Lucie McAulay	
		De-delegation 2024/25 decision	Decision	Liz Jackson	
Thursday 22/02/2024	Approval of EY funding by SF before end of Feb. Can't hold SF meeting during half term.	Free Early Education Entitlement rates and centrally retained funding 2024/25	Decision and consultation	Chris Sutton	
		High Needs Budget 2024/25	Information	Lucie McAulay / Shirely Maidens	
		DSG budget monitoring 2023/24	Information	Lucie McAulay/Shirley Maidens	

This page is intentionally left blank